

For Research Use Only

# SLC7A2 Recombinant Matched Antibody Pair, PBS Only



Catalog Number: MP00492-1

## Capture Antibody Information

**Catalog Number:**  
83493-2-PBS

**Host:**  
Rabbit

**Isotype:**  
IgG

**Purification Method:**  
Protein A purification

**Clone ID:**  
240362E3

**Reactivity:**  
Human

**GenBank:**  
BC104905

**Immunogen Catalog Number:**  
Ag31207

**Conjugate:**  
Unconjugated

**Full name:**  
solute carrier family 7 (cationic amino acid transporter, y+ system), member 2

**Gene ID:**  
6542

## Detection Antibody Information

**Catalog Number:**  
83493-1-PBS

**Host:**  
Rabbit

**Isotype:**  
IgG

**Purification Method:**  
Protein A purification

**Clone ID:**  
240362A10

**Reactivity:**  
Human

**GenBank:**  
BC104905

**Immunogen Catalog Number:**  
Ag31207

**Conjugate:**  
Unconjugated

**Full name:**  
solute carrier family 7 (cationic amino acid transporter, y+ system), member 2

**Gene ID:**  
6542

## Applications

**Tested Applications:**  
Cytometric bead array

**Range:**  
0.313-40 ng/mL (Cytometric Bead Array)

**Recommended Dilutions:**  
It is recommended that this reagent should be titrated in each testing system to obtain optimal results.

## Product Information

MP00492-1 targets SLC7A2 in immunoassays as a matched antibody pair. Validated in Cytometric bead array.

Capture antibody: SLC7A2 Recombinant antibody, PBS Only (Capture) 83493-2-PBS (240362E3). 100 µg. Concentration 1 mg/ml.

Detection antibody: SLC7A2 Recombinant antibody, PBS Only (Detector) 83493-1-PBS (240362A10). 100 µg. Concentration 1 mg/ml.

Unconjugated rabbit recombinant monoclonal antibody pair in PBS only storage buffer at a concentration of 1 mg/mL, ready for conjugation. Created using Proteintech's proprietary in-house recombinant technology. Recombinant production enables unrivalled batch-to-batch consistency, easy scale-up, and future security of supply.

Matched antibody pairs are designed for use in a variety of assays and platforms that require matched antibody pairs.

Antibody use should be optimized for each application and assay.

## Storage

**Storage:**  
Store at -80°C.  
**Storage buffer:**  
PBS only

For technical support and original validation data for this product please contact:

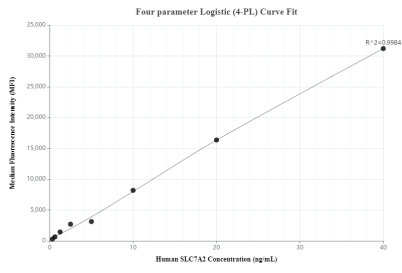
T: 4006900926

E: [Proteintech-CN@ptglab.com](mailto:Proteintech-CN@ptglab.com)

W: [ptgcn.com](http://ptgcn.com)

**This product is exclusively available under Proteintech Group brand and is not available to purchase from any other manufacturer.**

## Selected Validation Data



Cytometric bead array standard curve of MP00492-1, SLC7A2 Recombinant Matched Antibody Pair, PBS Only. Capture antibody: 83493-2-PBS. Detection antibody: 83493-1-PBS. Standard: Ag31207. Range: 0.313-40 ng/mL