

For Research Use Only



NCAM2 Recombinant Matched Antibody Pair, PBS Only

Catalog Number: MP00493-3

Capture Antibody Information

Catalog Number:
83494-1-PBS
Host:
Rabbit
Isotype:
IgG
Purification Method:
Protein A purification

Clone ID:
240398B7
Reactivity:
human
GenBank:
BC052946
Immunogen Catalog Number:
Ag4821

Conjugate:
Unconjugated
Full name:
neural cell adhesion molecule 2
Gene ID:
4685

Detection Antibody Information

Catalog Number:
83494-4-PBS
Host:
Rabbit
Isotype:
IgG
Purification Method:
Protein A purification

Clone ID:
240398D6
Reactivity:
human
GenBank:
BC052946
Immunogen Catalog Number:
Ag4821

Conjugate:
Unconjugated
Full name:
neural cell adhesion molecule 2
Gene ID:
4685

Applications

Tested Applications:
Cytometric bead array, Sandwich ELISA

Range:
0.313-40 ng/mL (Cytometric Bead Array)
78.1-5000 pg/mL (Sandwich ELISA)

Recommended Dilutions:
It is recommended that this reagent should be titrated in each testing system to obtain optimal results.

Product Information

MP00493-3 targets NCAM2 in immunoassays as a matched antibody pair. Validated in Cytometric bead array, Sandwich ELISA.

Capture antibody: NCAM2 Recombinant antibody, PBS Only (Capture) 83494-1-PBS (240398B7). 100 µg. Concentration 1 mg/ml.

Detection antibody: NCAM2 Recombinant antibody, PBS Only (Detector) 83494-4-PBS (240398D6). 100 µg. Concentration 1 mg/ml.

Alternative NCAM2 matched antibody pairs: MP00493-1, MP00493-2

Unconjugated rabbit recombinant monoclonal antibody pair in PBS only storage buffer at a concentration of 1 mg/mL, ready for conjugation. Created using Proteintech's proprietary in-house recombinant technology. Recombinant production enables unrivalled batch-to-batch consistency, easy scale-up, and future security of supply.

Matched antibody pairs are designed for use in a variety of assays and platforms that require matched antibody pairs.

Antibody use should be optimized for each application and assay.

Storage

Storage:
Store at -80°C.
The product is shipped with ice packs. Upon receipt, store it immediately at -80°C
Storage buffer:
PBS only

For technical support and original validation data for this product please contact:

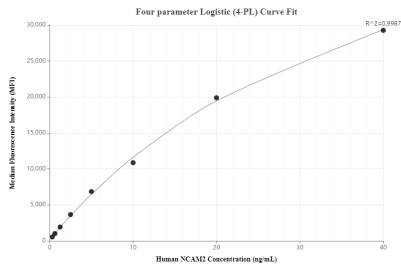
T: 4006900926

E: Proteintech-CN@ptglab.com

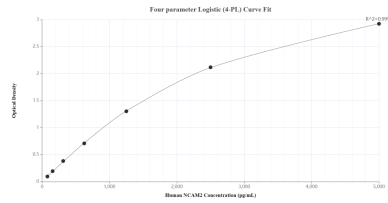
W: ptgcn.com

This product is exclusively available under Proteintech Group brand and is not available to purchase from any other manufacturer.

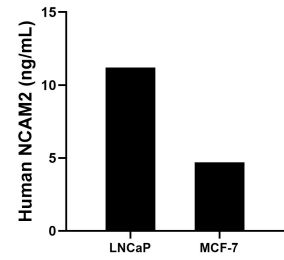
Selected Validation Data



Cytometric bead array standard curve of MP00493-3, NCAM2 Recombinant Matched Antibody Pair, PBS Only. Capture antibody: 83494-1-PBS. Detection antibody: 83494-4-PBS. Standard: Ag4821. Range: 0.313-40 ng/mL



Sandwich ELISA standard curve of MP00493-3, Human NCAM2 Recombinant Matched Antibody Pair - PBS only. 83494-1-PBS was coated to a plate as the capture antibody and incubated with serial dilutions of standard Ag4821. 83494-4-PBS was HRP conjugated as the detection antibody. Range: 78.1-5000 pg/mL



The mean NCAM2 concentration was determined to be 11.2 ng/mL in LNCaP cell extract based on a 3.0 mg/mL extract load and 4.7 ng/mL in MCF-7 cell extract based on a 4.3 mg/mL extract load.