

For Research Use Only

LAMR1/RPSA Recombinant Matched Antibody Pair, PBS Only



Catalog Number:MP00494-4

Capture Antibody Information

Catalog Number:
83495-1-PBS

Host:
Rabbit

Isotype:
IgG

Purification Method:
Protein A purification

Clone ID:
240461C6

Reactivity:
human

GenBank:
BC050688

Immunogen Catalog Number:
Ag6033

Conjugate:
Unconjugated

Full name:
ribosomal protein SA

Gene ID:
3921

Detection Antibody Information

Catalog Number:
83495-6-PBS

Host:
Rabbit

Isotype:
IgG

Purification Method:
Protein A purification

Clone ID:
240461B1

Reactivity:
human

GenBank:
BC050688

Immunogen Catalog Number:
Ag6033

Conjugate:
Unconjugated

Full name:
ribosomal protein SA

Gene ID:
3921

Applications

Tested Applications:
Sandwich ELISA

Range:
1.56-100 ng/mL (Sandwich ELISA)

Recommended Dilutions:
It is recommended that this reagent should be titrated in each testing system to obtain optimal results.

Product Information

MP00494-4 targets LAMR1/RPSA in immunoassays as a matched antibody pair. Validated in Sandwich ELISA.

Capture antibody: LAMR1/RPSA Recombinant antibody, PBS Only (Capture) 83495-1-PBS (240461C6). 100 μ g. Concentration 1 mg/ml.

Detection antibody: LAMR1/RPSA Recombinant antibody, PBS Only (Detector) 83495-6-PBS (240461B1). 100 μ g. Concentration 1 mg/ml.

Alternative LAMR1/RPSA matched antibody pairs: MP00494-1, MP00494-2, MP00494-3

Unconjugated rabbit recombinant monoclonal antibody pair in PBS only storage buffer at a concentration of 1 mg/mL, ready for conjugation. Created using Proteintech's proprietary in-house recombinant technology. Recombinant production enables unrivalled batch-to-batch consistency, easy scale-up, and future security of supply.

Matched antibody pairs are designed for use in a variety of assays and platforms that require matched antibody pairs.

Antibody use should be optimized for each application and assay.

Storage

Storage:

Store at -80°C.

The product is shipped with ice packs. Upon receipt, store it immediately at -80°C

Storage buffer:

PBS only

For technical support and original validation data for this product please contact:

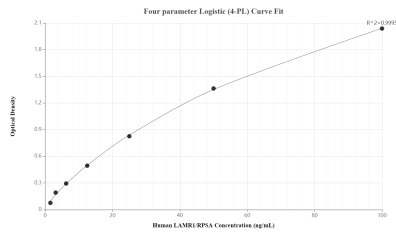
T: 4006900926

E: Proteintech-CN@ptglab.com

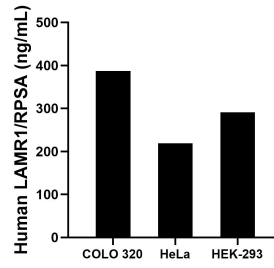
W: ptgcn.com

This product is exclusively available under Proteintech Group brand and is not available to purchase from any other manufacturer.

Selected Validation Data



Sandwich ELISA standard curve of MP00494-4, Human LAMR1/RPSA Recombinant Matched Antibody Pair - PBS only. 83495-1-PBS was coated to a plate as the capture antibody and incubated with serial dilutions of standard Ag6033. 83495-6-PBS was HRP conjugated as the detection antibody. Range: 1.56-100 ng/mL.



The mean LAMR1/RPSA concentration was determined to be 387.00 ng/mL in COLO 320 cell extract based on a 2.00 mg/mL extract load, 218.85 ng/mL in HeLa cell extract based on a 1.20 mg/mL extract load and 291.26 ng/mL in HEK-293 cell extract based on a 1.20 mg/mL extract load.