

Mouse PD-1 Recombinant Matched Antibody Pair, PBS Only

Catalog Number:MP00496-4

Capture Antibody Information

Catalog Number:
83516-4-PBS

Host:
Rabbit

Isotype:
IgG

Purification Method:
Protein A purification

Clone ID:
240390D5

Reactivity:
mouse

GenBank:
NM_008798.2

Conjugate:

Unconjugated

Full name:
programmed cell death 1

Gene ID:
18566

Detection Antibody Information

Catalog Number:
83516-9-PBS

Host:
Rabbit

Isotype:
IgG

Purification Method:
Protein A purification

Clone ID:
240389D12

Reactivity:
mouse

GenBank:
NM_008798.2

Conjugate:

Unconjugated

Full name:
programmed cell death 1

Gene ID:
18566

Applications

Tested Applications:
Sandwich ELISA

Range:
62.5-4000 pg/mL (Sandwich ELISA)

Recommended Dilutions:
It is recommended that this reagent should be titrated in each testing system to obtain optimal results.

Product Information

MP00496-4 targets PD-1 in immunoassays as a matched antibody pair. Validated in Sandwich ELISA.

Capture antibody: Mouse PD-1/CD279 Recombinant antibody, PBS Only (Capture) 83516-4-PBS (240390D5). 100 μ g. Concentration 1 mg/ml.

Detection antibody: Mouse PD-1/CD279 Recombinant antibody, PBS Only (Detector) 83516-9-PBS (240389D12). 100 μ g. Concentration 1 mg/ml.

Alternative PD-1 matched antibody pairs: MP00496-1, MP00496-2, MP00496-3

Unconjugated rabbit recombinant monoclonal antibody pair in PBS only storage buffer at a concentration of 1 mg/mL, ready for conjugation. Created using Proteintech's proprietary in-house recombinant technology. Recombinant production enables unrivalled batch-to-batch consistency, easy scale-up, and future security of supply.

Matched antibody pairs are designed for use in a variety of assays and platforms that require matched antibody pairs.

Antibody use should be optimized for each application and assay.

Storage

Storage:

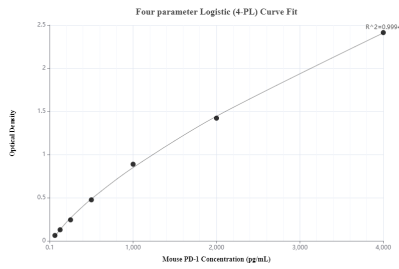
Store at -80°C.

The product is shipped with ice packs. Upon receipt, store it immediately at -80°C

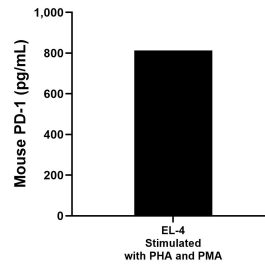
Storage buffer:

PBS only

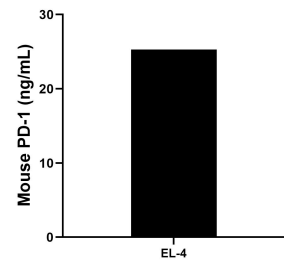
Selected Validation Data



Sandwich ELISA standard curve of MP00496-4, Mouse PD-1 Monoclonal Matched Antibody Pair - PBS only. 83516-4-PBS was coated to a plate as the capture antibody and incubated with serial dilutions of standard Eg0918. 83516-9-PBS was HRP conjugated as the detection antibody. Range: 62.5-4000 pg/mL



EL-4 was cultured in RPMI 1640 supplemented with 10% fetal bovine serum, 50 μ M β -mercaptoethanol, 2 mM L-glutamine, and 100 μ g/mL of streptomycin sulfate. The cells were stimulated with 10 μ g/mL of PHA and 10 ng/mL of PMA. An aliquot of the cell culture supernatant was removed, assayed for mouse PD-1 and measured 812.8 pg/mL.



The mean mouse PD-1 concentration was determined to be 14.08 ng/mL in EL-4 cell extract based on a 3.0 mg/mL extract load.