

For Research Use Only

SLC24A2 Recombinant Matched Antibody Pair, PBS Only



Catalog Number:MP00501-2

Capture Antibody Information

Catalog Number:
83529-1-PBS
Host:
Rabbit
Isotype:
IgG
Purification Method:
Protein A purification

Clone ID:
240467B11
Reactivity:
Human
GenBank:
NM_020344
Immunogen Catalog Number:
Ag35294

Conjugate:
Unconjugated
Full name:
solute carrier family 24 (sodium/potassium/calcium exchanger), member 2
Gene ID:
25769

Detection Antibody Information

Catalog Number:
83529-4-PBS
Host:
Rabbit
Isotype:
IgG
Purification Method:
Protein A purification

Clone ID:
240467H3
Reactivity:
Human
GenBank:
NM_020344
Immunogen Catalog Number:
Ag35294

Conjugate:
Unconjugated
Full name:
solute carrier family 24 (sodium/potassium/calcium exchanger), member 2
Gene ID:
25769

Applications

Tested Applications:
Cytometric bead array

Range:
0.78-100 ng/mL (Cytometric Bead Array)

Recommended Dilutions:
It is recommended that this reagent should be titrated in each testing system to obtain optimal results.

Product Information

MP00501-2 targets SLC24A2 in immunoassays as a matched antibody pair. Validated in Cytometric bead array.

Capture antibody: SLC24A2 Recombinant antibody, PBS Only (Capture) 83529-1-PBS (240467B11). 100 µg. Concentration 1 mg/ml.

Detection antibody: SLC24A2 Recombinant antibody, PBS Only (Detector) 83529-4-PBS (240467H3). 100 µg. Concentration 1 mg/ml.

Alternative SLC24A2 matched antibody pairs: MP00501-1, MP00501-3

Unconjugated rabbit recombinant monoclonal antibody pair in PBS only storage buffer at a concentration of 1 mg/mL, ready for conjugation. Created using Proteintech's proprietary in-house recombinant technology. Recombinant production enables unrivalled batch-to-batch consistency, easy scale-up, and future security of supply.

Matched antibody pairs are designed for use in a variety of assays and platforms that require matched antibody pairs.

Antibody use should be optimized for each application and assay.

Storage

Storage:
Store at -80°C.
Storage buffer:
PBS only

For technical support and original validation data for this product please contact:

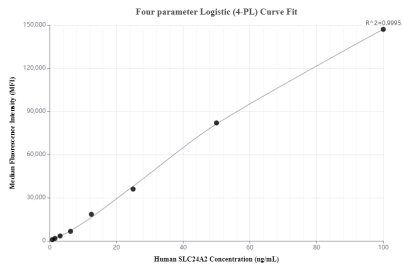
T: 4006900926

E: Proteintech-CN@ptglab.com

W: ptgcn.com

This product is exclusively available under Proteintech Group brand and is not available to purchase from any other manufacturer.

Selected Validation Data



Cytometric bead array standard curve of MP00501-2, SLC24A2 Recombinant Matched Antibody Pair, PBS Only. Capture antibody: 83529-1-PBS. Detection antibody: 83529-4-PBS. Standard: Ag35294. Range: 0.78-100 ng/mL.