

Integrin beta-5 Recombinant Matched Antibody Pair, PBS Only

Catalog Number:MP00512-4

Capture Antibody Information

Catalog Number:
83514-3-PBS
Host:
Rabbit
Isotype:
IgG
Purification Method:
Protein A purification

Clone ID:
240401G11
Reactivity:
human
GenBank:
BC006541
Immunogen Catalog Number:
Ag29783

Conjugate:
Unconjugated
Full name:
integrin, beta 5
Gene ID:
3693

Detection Antibody Information

Catalog Number:
83514-1-PBS
Host:
Rabbit
Isotype:
IgG
Purification Method:
Protein A purification

Clone ID:
240401C12
Reactivity:
human
GenBank:
BC006541
Immunogen Catalog Number:
Ag29783

Conjugate:
Unconjugated
Full name:
integrin, beta 5
Gene ID:
3693

Applications

Tested Applications:
Sandwich ELISA

Range:
9.766-625 pg/mL (Sandwich ELISA)

Recommended Dilutions:
It is recommended that this reagent should be titrated in each testing system to obtain optimal results.

Product Information

MP00512-4 targets Integrin beta-5 in immunoassays as a matched antibody pair. Validated in Sandwich ELISA.

Capture antibody: Integrin beta-5 Recombinant antibody, PBS Only (Capture/Detector) 83514-3-PBS (240401G11). 100 µg. Concentration 1 mg/ml.

Detection antibody: Integrin beta-5 Recombinant antibody, PBS Only (Detector) 83514-1-PBS (240401C12). 100 µg. Concentration 1 mg/ml.

Alternative Integrin beta-5 matched antibody pairs: MP00512-1, MP00512-2, MP00512-3

Unconjugated rabbit recombinant monoclonal antibody pair in PBS only storage buffer at a concentration of 1 mg/mL, ready for conjugation. Created using Proteintech's proprietary in-house recombinant technology. Recombinant production enables unrivalled batch-to-batch consistency, easy scale-up, and future security of supply.

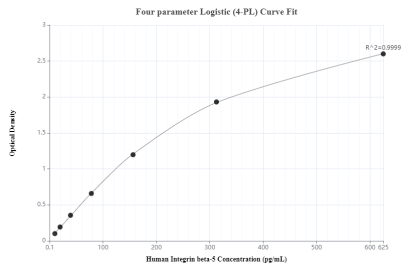
Matched antibody pairs are designed for use in a variety of assays and platforms that require matched antibody pairs.

Antibody use should be optimized for each application and assay.

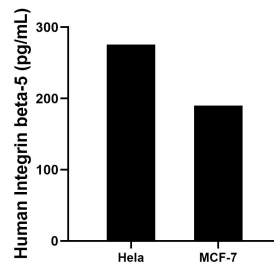
Storage

Storage:
Store at -80°C.
The product is shipped with ice packs. Upon receipt, store it immediately at -80°C
Storage buffer:
PBS only

Selected Validation Data



Sandwich ELISA standard curve of MP00512-4, Integrin beta-5 Recombinant Matched Antibody Pair - PBS only. 83514-3-PBS was coated to a plate as the capture antibody and incubated with serial dilutions of standard Ag29783.83514-1-PBS was HRP conjugated as the detection antibody. Range: 9.766-625 pg/mL



The mean Integrin beta-5 concentration was determined to be 275.71 pg/mL in HeLa cell extract based on a 2.8 mg/mL extract load and 190.06 pg/mL in MCF-7 cell extract based on a 3.1 mg/mL extract load.