

# PSMD1 Recombinant Matched Antibody Pair, PBS Only

Catalog Number: MP00519-3

## Capture Antibody Information

**Catalog Number:**  
83521-2-PBS  
**Host:**  
Rabbit  
**Isotype:**  
IgG  
**Purification Method:**  
Protein A purification

**Clone ID:**  
240458B3  
**Reactivity:**  
human, mouse, rat  
**GenBank:**  
BC094720  
**Immunogen Catalog Number:**  
Ag12009

**Conjugate:**  
Unconjugated  
**Full name:**  
proteasome (prosome, macropain)  
26S subunit, non-ATPase, 1  
**Gene ID:**  
5707

## Detection Antibody Information

**Catalog Number:**  
83521-5-PBS  
**Host:**  
Rabbit  
**Isotype:**  
IgG  
**Purification Method:**  
Protein A purification

**Clone ID:**  
240458C4  
**Reactivity:**  
human  
**GenBank:**  
BC094720  
**Immunogen Catalog Number:**  
Ag12009

**Conjugate:**  
Unconjugated  
**Full name:**  
proteasome (prosome, macropain)  
26S subunit, non-ATPase, 1  
**Gene ID:**  
5707

## Applications

**Tested Applications:**  
Sandwich ELISA

**Range:**  
78.1-5000 pg/mL (Sandwich ELISA)

**Recommended Dilutions:**  
It is recommended that this reagent should be titrated in each testing system to obtain optimal results.

## Product Information

MP00519-3 targets PSMD1 in immunoassays as a matched antibody pair. Validated in Sandwich ELISA.

Capture antibody: PSMD1 Recombinant antibody, PBS Only (Capture/Detector) 83521-2-PBS (240458B3). 100 µg. Concentration 1 mg/ml.

Detection antibody: PSMD1 Recombinant antibody, PBS Only (Detector) 83521-5-PBS (240458C4). 100 µg. Concentration 1 mg/ml.

Alternative PSMD1 matched antibody pairs: MP00519-1, MP00519-2

Unconjugated rabbit recombinant monoclonal antibody pair in PBS only storage buffer at a concentration of 1 mg/mL, ready for conjugation. Created using Proteintech's proprietary in-house recombinant technology. Recombinant production enables unrivalled batch-to-batch consistency, easy scale-up, and future security of supply.

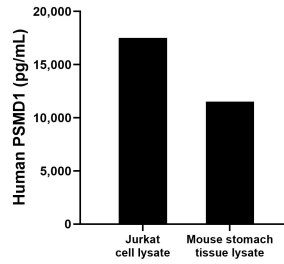
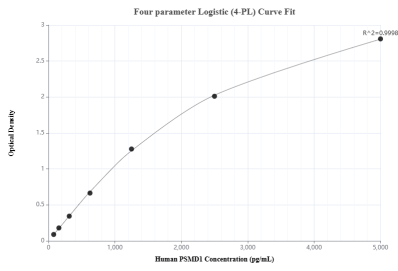
Matched antibody pairs are designed for use in a variety of assays and platforms that require matched antibody pairs.

Antibody use should be optimized for each application and assay.

## Storage

**Storage:**  
Store at -80°C.  
**The product is shipped with ice packs. Upon receipt, store it immediately at -80°C**  
**Storage buffer:**  
PBS only

## Selected Validation Data



Sandwich ELISA standard curve of MP00519-3, Human PSMD1 Recombinant Matched Antibody Pair - PBS only. 83521-2-PBS was coated to a plate as the capture antibody and incubated with serial dilutions of standard Ag12009. 83521-5-PBS was HRP conjugated as the detection antibody. Range: 78.1-5000 pg/mL

Mouse stomach tissue lysate and Jurkat cell lysate were measured. The human PSMD1 concentration of detected samples was determined to be 11,510.8 pg/mL in mouse stomach lysate (based on a 4.0 mg/mL extract load) and 17,515.2 pg/mL in Jurkat cell lysate (based on a 3.4 mg/mL extract load).