

For Research Use Only

Mouse IL-2 Recombinant Matched Antibody Pair, PBS Only



Catalog Number:MP00533-3

Capture Antibody Information

Catalog Number:
98055-1-PBS

Host:
Rabbit

Isotype:
IgG

Purification Method:
Protein A purification

Clone ID:
240358A2

Reactivity:
mouse

GenBank:
NM_008366

Conjugate:
Unconjugated

Full name:
interleukin 2

Gene ID:
16183

Detection Antibody Information

Catalog Number:
83547-1-PBS

Host:
Rabbit

Isotype:
IgG

Purification Method:
Protein A purification

Clone ID:
240358A4

Reactivity:
mouse

GenBank:
NM_008366

Conjugate:
Unconjugated

Full name:
interleukin 2

Gene ID:
16183

Applications

Tested Applications:
Sandwich ELISA

Range:
6.25-400 pg/mL (Sandwich ELISA)

Recommended Dilutions:
It is recommended that this reagent should be titrated in each testing system to obtain optimal results.

Product Information

MP00533-3 targets IL-2 in immunoassays as a matched antibody pair. Validated in Sandwich ELISA.

Capture antibody: Anti-Mouse IL-2 Rabbit Recombinant Antibody, PBS Only 98055-1-PBS (240358A2). 100 μ g. Concentration 1 mg/ml.

Detection antibody: Mouse IL-2 Recombinant antibody, PBS Only (Capture/Detector) 83547-1-PBS (240358A4). 100 μ g. Concentration 1 mg/ml.

Alternative IL-2 matched antibody pairs: MP00533-1, MP00533-2

Unconjugated rabbit recombinant monoclonal antibody pair in PBS only storage buffer at a concentration of 1 mg/mL, ready for conjugation. Created using Proteintech's proprietary in-house recombinant technology. Recombinant production enables unrivalled batch-to-batch consistency, easy scale-up, and future security of supply.

Matched antibody pairs are designed for use in a variety of assays and platforms that require matched antibody pairs.

Antibody use should be optimized for each application and assay.

Storage

Storage:

Store at -80°C.

The product is shipped with ice packs. Upon receipt, store it immediately at -80°C

Storage buffer:

PBS only

For technical support and original validation data for this product please contact:

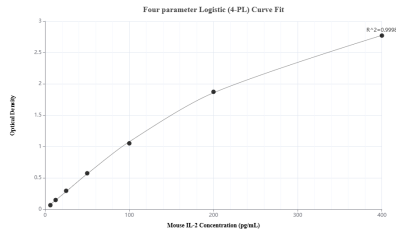
T: 4006900926

E: Proteintech-CN@ptglab.com

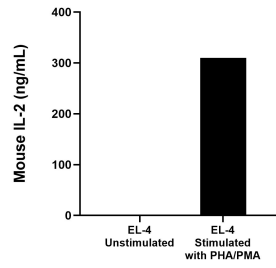
W: ptgcn.com

This product is exclusively available under Proteintech Group brand and is not available to purchase from any other manufacturer.

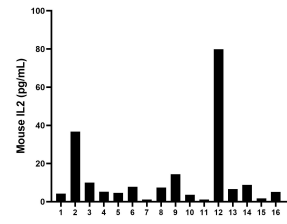
Selected Validation Data



Sandwich ELISA standard curve of MP00533-3, mouse IL-2 Recombinant Matched Antibody Pair - PBS only. 98055-1-PBS was coated to a plate as the capture antibody and incubated with serial dilutions of standard Eg0762. 83547-1-PBS was HRP conjugated as the detection antibody. Range: 6.25-400 pg/mL



EL-4 mouse lymphoblast cells (1×10^6 cells/mL) were cultured for 3 days in DMEM supplemented with 10% fetal bovine serum and stimulated with $10 \mu\text{g/mL}$ PHA and 10 ng/mL PMA. The mean mouse IL-2 concentration was determined to be 16.1 pg/mL in unstimulated EL-4, 309.9 ng/mL in PHA and PMA stimulated EL-4 supernatant.



Serum of sixteen mice was measured. The mouse IL-2 concentration was determined to be 2.27 pg/mL with a range of $1.1\text{-}79.9 \text{ pg/mL}$.