

For Research Use Only

# Mouse GSDMD Recombinant Matched Antibody Pair, PBS Only



Catalog Number: MP00534-2

## Capture Antibody Information

**Catalog Number:**  
83562-2-PBS  
**Host:**  
Rabbit  
**Isotype:**  
IgG  
**Purification Method:**  
Protein A purification

**Clone ID:**  
240548G12  
**Reactivity:**  
mouse  
**GenBank:**  
BC029813  
**Immunogen Catalog Number:**  
Ag34905

**Conjugate:**  
Unconjugated  
**Full name:**  
gasdermin D  
**Gene ID:**  
69146

## Detection Antibody Information

**Catalog Number:**  
83562-3-PBS  
**Host:**  
Rabbit  
**Isotype:**  
IgG  
**Purification Method:**  
Protein A purification

**Clone ID:**  
240548B10  
**Reactivity:**  
mouse  
**GenBank:**  
BC029813  
**Immunogen Catalog Number:**  
Ag34905

**Conjugate:**  
Unconjugated  
**Full name:**  
gasdermin D  
**Gene ID:**  
69146

## Applications

**Tested Applications:**  
Cytometric bead array, Sandwich  
ELISA

**Range:**  
0.625-80 ng/mL (Cytometric Bead  
Array)  
0.16-10 ng/mL (Sandwich ELISA)

**Recommended Dilutions:**  
It is recommended that this reagent  
should be titrated in each testing  
system to obtain optimal results.

## Product Information

MP00534-2 targets GSDMD in immunoassays as a matched antibody pair. Validated in Cytometric bead array, Sandwich ELISA.

Capture antibody: Mouse GSDMD Recombinant antibody, PBS Only (Capture) 83562-2-PBS (240548G12). 100 µg. Concentration 1 mg/mL.

Detection antibody: Mouse GSDMD Recombinant antibody, PBS Only (Capture/Detector) 83562-3-PBS (240548B10). 100 µg. Concentration 1 mg/mL.

Alternative GSDMD matched antibody pairs: MP00534-1, MP00534-3

Unconjugated rabbit recombinant monoclonal antibody pair in PBS only storage buffer at a concentration of 1 mg/mL, ready for conjugation. Created using Proteintech's proprietary in-house recombinant technology. Recombinant production enables unrivalled batch-to-batch consistency, easy scale-up, and future security of supply.

Matched antibody pairs are designed for use in a variety of assays and platforms that require matched antibody pairs.

Antibody use should be optimized for each application and assay.

## Storage

**Storage:**  
Store at -80°C.  
**The product is shipped with ice packs. Upon receipt, store it immediately at -80°C**  
**Storage buffer:**  
PBS only

For technical support and original validation data for this product please contact:

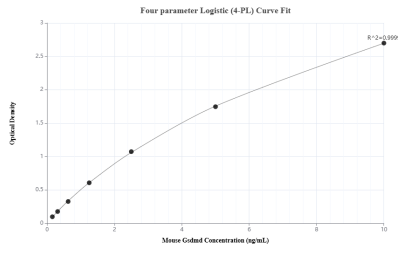
T: 4006900926

E: [Proteintech-CN@ptglab.com](mailto:Proteintech-CN@ptglab.com)

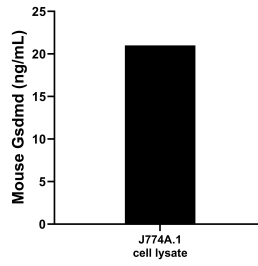
W: [ptgcn.com](http://ptgcn.com)

**This product is exclusively available under Proteintech Group brand and is not available to purchase from any other manufacturer.**

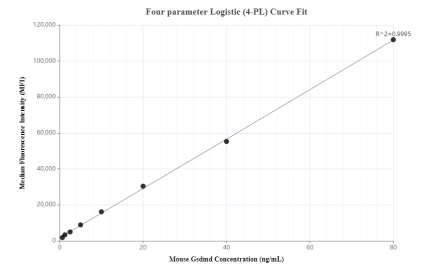
## Selected Validation Data



Sandwich ELISA standard curve of MP00534-2, Mouse Gsdmd Recombinant Matched Antibody Pair - PBS only. 83562-2-PBS was coated to a plate as the capture antibody and incubated with serial dilutions of standard Ag34905. 83562-3-PBS was HRP conjugated as the detection antibody. Range: 0.16-10 ng/mL



J774A.1 cell lysate was measured. The mouse Gsdmd concentration of detected samples was determined to be 21.0 ng/mL, based on a 3.4 mg/mL lysate load.



Cytometric bead array standard curve of MP00534-2, MOUSE GSDMD Recombinant Matched Antibody Pair, PBS Only. Capture antibody: 83562-2-PBS. Detection antibody: 83562-3-PBS. Standard: Ag34905. Range: 0.625-80 ng/mL