

# 4EBP1 Recombinant Matched Antibody Pair, PBS Only

Catalog Number: MP00559-3

## Capture Antibody Information

**Catalog Number:**  
83890-1-PBS  
**Host:**  
Rabbit  
**Isotype:**  
IgG  
**Purification Method:**  
Protein A purification

**Clone ID:**  
241055C6  
**Reactivity:**  
human  
**GenBank:**  
BC004459  
**Immunogen Catalog Number:**  
Ag5056

**Conjugate:**  
Unconjugated  
**Full name:**  
eukaryotic translation initiation factor 4E binding protein 1  
**Gene ID:**  
1978

## Detection Antibody Information

**Catalog Number:**  
83890-2-PBS  
**Host:**  
Rabbit  
**Isotype:**  
IgG  
**Purification Method:**  
Protein A purification

**Clone ID:**  
241055F11  
**Reactivity:**  
human  
**GenBank:**  
BC004459  
**Immunogen Catalog Number:**  
Ag5056

**Conjugate:**  
Unconjugated  
**Full name:**  
eukaryotic translation initiation factor 4E binding protein 1  
**Gene ID:**  
1978

## Applications

**Tested Applications:**  
Cytometric bead array, Sandwich ELISA

**Range:**  
0.625-80 ng/mL (Cytometric Bead Array)  
39.06-2500 pg/mL (Sandwich ELISA)

**Recommended Dilutions:**  
It is recommended that this reagent should be titrated in each testing system to obtain optimal results.

## Product Information

MP00559-3 targets 4EBP1 in immunoassays as a matched antibody pair. Validated in Cytometric bead array, Sandwich ELISA.

Capture antibody: 4EBP1 Recombinant antibody, PBS Only (Capture/Detector) 83890-1-PBS (241055C6). 100 µg. Concentration 1 mg/ml.

Detection antibody: 4EBP1 Recombinant antibody, PBS Only (Detector) 83890-2-PBS (241055F11). 100 µg. Concentration 1 mg/ml.

Alternative 4EBP1 matched antibody pairs: MP00559-1, MP00559-2, MP00559-4, MP00559-5

Unconjugated rabbit recombinant monoclonal antibody pair in PBS only storage buffer at a concentration of 1 mg/mL, ready for conjugation. Created using Proteintech's proprietary in-house recombinant technology. Recombinant production enables unrivalled batch-to-batch consistency, easy scale-up, and future security of supply.

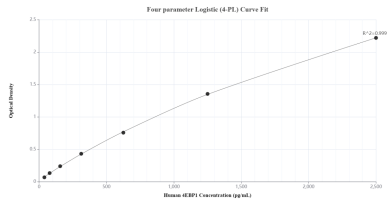
Matched antibody pairs are designed for use in a variety of assays and platforms that require matched antibody pairs.

Antibody use should be optimized for each application and assay.

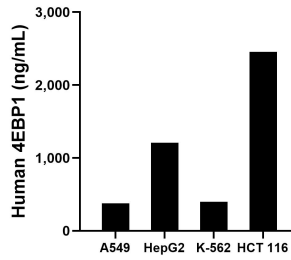
## Storage

**Storage:**  
Store at -80°C.  
**The product is shipped with ice packs. Upon receipt, store it immediately at -80°C**  
**Storage buffer:**  
PBS only

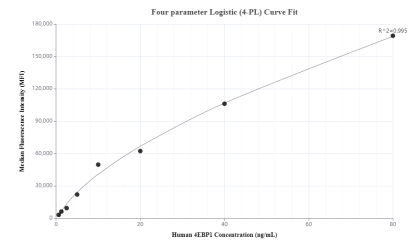
## Selected Validation Data



Sandwich ELISA standard curve of MP00559-3, Human 4EBP1 Recombinant Matched Antibody Pair - PBS only. 83890-1-PBS was coated to a plate as the capture antibody and incubated with serial dilutions of standard Ag5056. 83890-2-PBS was HRP conjugated as the detection antibody. Range: 39.06-2500 pg/mL



The mean 4EBP1 concentration was determined to be 375.9 ng/mL in A549 cell extract based on a 3.0 mg/mL extract load, 1,210.9 ng/mL in HepG2 cell extract based on a 8.5 mg/mL extract load, 396.7 ng/mL in K-562 cell extract based on a 5.2 mg/mL extract load and 2,456.3 ng/mL in HCT 116 cell extract based on a 6.1 mg/mL extract load.



Cytometric bead array standard curve of MP00559-3, 4EBP1 Recombinant Matched Antibody Pair, PBS Only. Capture antibody: 83890-1-PBS. Detection antibody: 83890-2-PBS. Standard: Ag5056. Range: 0.625-80 ng/mL