

For Research Use Only

S100A9 Recombinant Matched Antibody Pair, PBS Only



Catalog Number:MP00569-4

Capture Antibody Information

Catalog Number:
83578-8-PBS

Host:
Rabbit

Isotype:
IgG

Purification Method:
Protein A purification

Clone ID:
240539A6

Reactivity:
human

GenBank:
BC047681

Immunogen Catalog Number:
Ag25764

Conjugate:
Unconjugated

Full name:
S100 calcium binding protein A9

Gene ID:
6280

Detection Antibody Information

Catalog Number:
83578-6-PBS

Host:
Rabbit

Isotype:
IgG

Purification Method:
Protein A purification

Clone ID:
240539F4

Reactivity:
human

GenBank:
BC047681

Immunogen Catalog Number:
Ag25764

Conjugate:
Unconjugated

Full name:
S100 calcium binding protein A9

Gene ID:
6280

Applications

Tested Applications:
Sandwich ELISA

Range:
78.1-5000 pg/mL (Sandwich ELISA)

Recommended Dilutions:
It is recommended that this reagent should be titrated in each testing system to obtain optimal results.

Product Information

MP00569-4 targets S100A9 in immunoassays as a matched antibody pair. Validated in Sandwich ELISA.

Capture antibody: S100A9 Recombinant antibody, PBS Only (Capture) 83578-8-PBS (240539A6). 100 µg. Concentration 1 mg/ml.

Detection antibody: S100A9 Recombinant antibody, PBS Only (Detector) 83578-6-PBS (240539F4). 100 µg. Concentration 1 mg/ml.

Unconjugated rabbit recombinant monoclonal antibody pair in PBS only storage buffer at a concentration of 1 mg/mL, ready for conjugation. Created using Proteintech's proprietary in-house recombinant technology. Recombinant production enables unrivalled batch-to-batch consistency, easy scale-up, and future security of supply.

Matched antibody pairs are designed for use in a variety of assays and platforms that require matched antibody pairs.

Antibody use should be optimized for each application and assay.

Storage

Storage:
Store at -80°C.

The product is shipped with ice packs. Upon receipt, store it immediately at -80°C

Storage buffer:
PBS only

For technical support and original validation data for this product please contact:

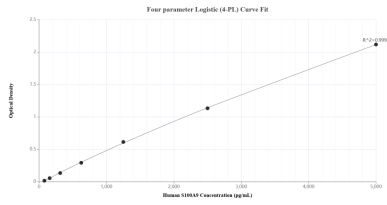
T: 4006900926

E: Proteintech-CN@ptglab.com

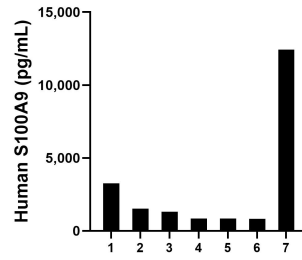
W: ptgcn.com

This product is exclusively available under Proteintech Group brand and is not available to purchase from any other manufacturer.

Selected Validation Data



Sandwich ELISA standard curve of MP00569-4, Human S100A9 Recombinant Matched Antibody Pair - PBS only. 83578-8-PBS was coated to a plate as the capture antibody and incubated with serial dilutions of standard Ag25764. 83578-6-PBS was HRP conjugated as the detection antibody. Range: 78.1-5000 pg/mL.



Serum of seven individual healthy human donors was measured. The S100A9 concentration of detected samples was determined to be 3,005.7 pg/mL with a range of 818.9-12,431.7 pg/mL.