

For Research Use Only

PEBP4 Recombinant Matched Antibody Pair, PBS Only



Catalog Number:MP00574-4

Capture Antibody Information

Catalog Number:
83589-7-PBS
Host:
Rabbit
Isotype:
IgG
Purification Method:
Protein A purification

Clone ID:
240547G9
Reactivity:
human
GenBank:
BC020779
Immunogen Catalog Number:
Ag9710

Conjugate:
Unconjugated
Full name:
phosphatidylethanolamine-binding protein 4
Gene ID:
157310

Detection Antibody Information

Catalog Number:
83589-6-PBS
Host:
Rabbit
Isotype:
IgG
Purification Method:
Protein A purification

Clone ID:
240547B9
Reactivity:
human
GenBank:
BC020779
Immunogen Catalog Number:
Ag9710

Conjugate:
Unconjugated
Full name:
phosphatidylethanolamine-binding protein 4
Gene ID:
157310

Applications

Tested Applications:
Sandwich ELISA

Range:
0.313-20 ng/mL (Sandwich ELISA)

Recommended Dilutions:
It is recommended that this reagent should be titrated in each testing system to obtain optimal results.

Product Information

MP00574-4 targets PEBP4 in immunoassays as a matched antibody pair. Validated in Sandwich ELISA.

Capture antibody: PEBP4 Recombinant antibody, PBS Only (Capture) 83589-7-PBS (240547G9). 100 µg. Concentration 1 mg/ml.

Detection antibody: PEBP4 Recombinant antibody, PBS Only (Detector) 83589-6-PBS (240547B9). 100 µg. Concentration 1 mg/ml.

Alternative PEBP4 matched antibody pairs: MP00574-1, MP00574-2, MP00574-3

Unconjugated rabbit recombinant monoclonal antibody pair in PBS only storage buffer at a concentration of 1 mg/mL, ready for conjugation. Created using Proteintech's proprietary in-house recombinant technology. Recombinant production enables unrivalled batch-to-batch consistency, easy scale-up, and future security of supply.

Matched antibody pairs are designed for use in a variety of assays and platforms that require matched antibody pairs.

Antibody use should be optimized for each application and assay.

Storage

Storage:
Store at -80°C.
The product is shipped with ice packs. Upon receipt, store it immediately at -80°C
Storage buffer:
PBS only

For technical support and original validation data for this product please contact:

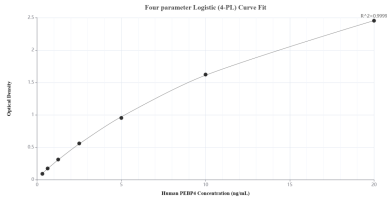
T: 4006900926

E: Proteintech-CN@ptglab.com

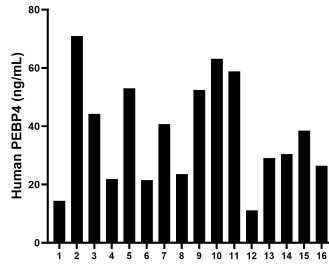
W: ptgcn.com

This product is exclusively available under Proteintech Group brand and is not available to purchase from any other manufacturer.

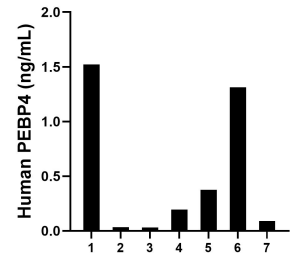
Selected Validation Data



Sandwich ELISA standard curve of MP00574-4, Human PEBP4 Recombinant Matched Antibody Pair - PBS only. 83589-7-PBS was coated to a plate as the capture antibody and incubated with serial dilutions of standard Ag9710. 83589-6-PBS was HRP conjugated as the detection antibody. Range: 0.313-20 ng/mL



Serum of sixteen individual healthy human donors was measured. The PEBP4 concentration of detected samples was determined to be 37.5 ng/mL with a range of 11.15-70.94 ng/mL



Urine of seven individual healthy human donors was measured. The PEBP4 concentration of detected samples was determined to be 0.51 ng/mL with a range of 0.09-1.52 ng/mL