

For Research Use Only

Drebrin Recombinant Matched Antibody Pair, PBS Only



Catalog Number:MP00585-4

Capture Antibody Information

Catalog Number:
83591-6-PBS
Host:
Rabbit
Isotype:
IgG
Purification Method:
Protein A purification

Clone ID:
240599G7
Reactivity:
human
GenBank:
BC000283
Immunogen Catalog Number:
Ag0371

Conjugate:
Unconjugated
Full name:
drebrin 1
Gene ID:
1627

Detection Antibody Information

Catalog Number:
83591-4-PBS
Host:
Rabbit
Isotype:
IgG
Purification Method:
Protein A purification

Clone ID:
240599H4
Reactivity:
human
GenBank:
BC000283
Immunogen Catalog Number:
Ag0371

Conjugate:
Unconjugated
Full name:
drebrin 1
Gene ID:
1627

Applications

Tested Applications:
Sandwich ELISA

Range:
0.156-10 ng/mL (Sandwich ELISA)

Recommended Dilutions:
It is recommended that this reagent should be titrated in each testing system to obtain optimal results.

Product Information

MP00585-4 targets Drebrin in immunoassays as a matched antibody pair. Validated in Sandwich ELISA.

Capture antibody: Drebrin Recombinant antibody, PBS Only (Capture) 83591-6-PBS (240599G7). 100 µg. Concentration 1 mg/ml.

Detection antibody: Drebrin Recombinant antibody, PBS Only (Detector) 83591-4-PBS (240599H4). 100 µg. Concentration 1 mg/ml.

Alternative Drebrin matched antibody pairs: MP00585-1, MP00585-2, MP00585-3

Unconjugated rabbit recombinant monoclonal antibody pair in PBS only storage buffer at a concentration of 1 mg/mL, ready for conjugation. Created using Proteintech's proprietary in-house recombinant technology. Recombinant production enables unrivalled batch-to-batch consistency, easy scale-up, and future security of supply.

Matched antibody pairs are designed for use in a variety of assays and platforms that require matched antibody pairs.

Antibody use should be optimized for each application and assay.

Storage

Storage:
Store at -80°C.
The product is shipped with ice packs. Upon receipt, store it immediately at -80°C
Storage buffer:
PBS only

For technical support and original validation data for this product please contact:

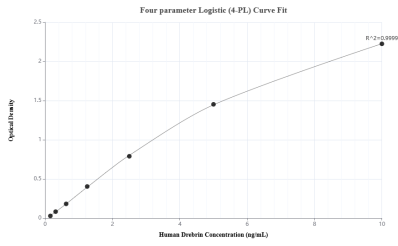
T: 4006900926

E: Proteintech-CN@ptglab.com

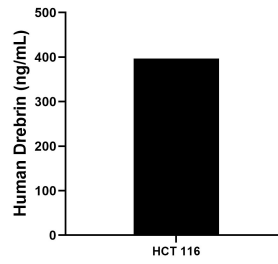
W: ptgcn.com

This product is exclusively available under Proteintech Group brand and is not available to purchase from any other manufacturer.

Selected Validation Data



Sandwich ELISA standard curve of MP00585-4, Human Drebrin Recombinant Matched Antibody Pair - PBS only. 83591-6-PBS was coated to a plate as the capture antibody and incubated with serial dilutions of standard Ag0371. 83591-4-PBS was HRP conjugated as the detection antibody. Range: 0.156-10 ng/mL



The mean human Drebrin concentration was determined to be 396.70 ng/mL in HCT 116 cell lysate based on a 1.3 mg/mL extract load.