

For Research Use Only

# Rat VEGF 164 Recombinant Matched Antibody Pair, PBS Only



Catalog Number:MP00598-3

## Capture Antibody Information

Catalog Number:  
83610-1-PBS

Host:  
Rabbit

Isotype:  
IgG

Purification Method:  
Protein A purification

Clone ID:  
240573B1

Reactivity:  
rat

GenBank:  
NM\_001287108.1

Conjugate:  
Unconjugated

Full name:  
vascular endothelial growth factor A

Gene ID:  
83785

## Detection Antibody Information

Catalog Number:  
83610-2-PBS

Host:  
Rabbit

Isotype:  
IgG

Purification Method:  
Protein A purification

Clone ID:  
240573B3

Reactivity:  
rat

GenBank:  
NM\_001287108.1

Conjugate:  
Unconjugated

Full name:  
vascular endothelial growth factor A

Gene ID:  
83785

## Applications

Tested Applications:  
Sandwich ELISA

Range:  
31.25-2000 pg/mL (Sandwich ELISA)

Recommended Dilutions:  
It is recommended that this reagent should be titrated in each testing system to obtain optimal results.

## Product Information

MP00598-3 targets VEGF 164 in immunoassays as a matched antibody pair. Validated in Sandwich ELISA.

Capture antibody: Rat VEGF 164 Recombinant antibody, PBS Only (Capture/Detector) 83610-1-PBS (240573B1). 100  $\mu$ g. Concentration 1 mg/ml.

Detection antibody: Rat VEGF 164 Recombinant antibody, PBS Only (Capture/Detector) 83610-2-PBS (240573B3). 100  $\mu$ g. Concentration 1 mg/ml.

Alternative VEGF 164 matched antibody pairs: MP00598-1, MP00598-2

Unconjugated rabbit recombinant monoclonal antibody pair in PBS only storage buffer at a concentration of 1 mg/mL, ready for conjugation. Created using Proteintech's proprietary in-house recombinant technology. Recombinant production enables unrivalled batch-to-batch consistency, easy scale-up, and future security of supply.

Matched antibody pairs are designed for use in a variety of assays and platforms that require matched antibody pairs.

Antibody use should be optimized for each application and assay.

## Storage

Storage:  
Store at -80°C.  
**The product is shipped with ice packs. Upon receipt, store it immediately at -80°C**  
Storage buffer:  
PBS only

For technical support and original validation data for this product please contact:

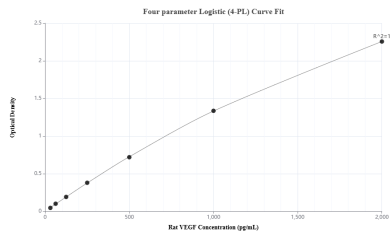
T: 4006900926

E: [Proteintech-CN@ptglab.com](mailto:Proteintech-CN@ptglab.com)

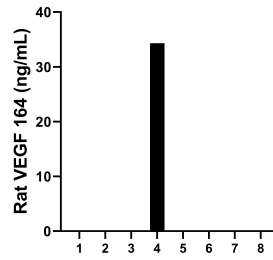
W: [ptgcn.com](http://ptgcn.com)

**This product is exclusively available under Proteintech Group brand and is not available to purchase from any other manufacturer.**

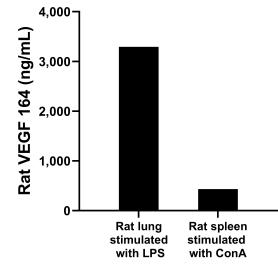
## Selected Validation Data



Sandwich ELISA standard curve of MP00598-3, Rat VEGF Recombinant Matched Antibody Pair - PBS only. 83610-1-PBS was coated to a plate as the capture antibody and incubated with serial dilutions of standard Eg0941. 83610-2-PBS was HRP conjugated as the detection antibody. Range: 31.25-2000 pg/mL



Serum of eight rats was measured. The VEGF 164 concentration of one sample was determined to be 34.3 pg/mL, and the range of VEGF 164 concentration was 0 - 34.3 pg/mL.



Rat lung, cut into 1-2 mm pieces, was cultured for 4 days in 25-30 mL of RPMI supplemented with 10% fetal bovine serum and stimulated with 2.5 ng/mL LPS. The cell culture supernatant was removed, assayed for rat VEGF, and measured 3292.9 pg/mL. Rat spleen, cut into 1-2 mm pieces, was cultured for 3-4 days in 25-30 mL of RPMI supplemented with 10% fetal bovine serum and stimulated with 10 μg/mL ConA. The cell culture supernatant was removed, assayed for