

For Research Use Only

# CUL3 Recombinant Matched Antibody Pair, PBS Only



Catalog Number:MP00599-4

## Capture Antibody Information

Catalog Number:  
83619-7-PBS

Host:  
Rabbit

Isotype:  
IgG

Purification Method:  
Protein A purification

Clone ID:  
240534A8

Reactivity:  
human

GenBank:  
BC039598

Immunogen Catalog Number:  
Ag1555

Conjugate:  
Unconjugated

Full name:  
cullin 3

Gene ID:  
8452

## Detection Antibody Information

Catalog Number:  
83619-1-PBS

Host:  
Rabbit

Isotype:  
IgG

Purification Method:  
Protein A purification

Clone ID:  
240534A6

Reactivity:  
human

GenBank:  
BC039598

Immunogen Catalog Number:  
Ag1555

Conjugate:  
Unconjugated

Full name:  
cullin 3

Gene ID:  
8452

## Applications

Tested Applications:  
Sandwich ELISA

Range:  
1.25-80 ng/mL (Sandwich ELISA)

Recommended Dilutions:  
It is recommended that this reagent should be titrated in each testing system to obtain optimal results.

## Product Information

MP00599-4 targets CUL3 in immunoassays as a matched antibody pair. Validated in Sandwich ELISA.

Capture antibody: CUL3 Recombinant antibody, PBS Only (Capture) 83619-7-PBS (240534A8). 100  $\mu$ g. Concentration 1 mg/ml.

Detection antibody: CUL3 Recombinant antibody, PBS Only (Capture/Detector) 83619-1-PBS (240534A6). 100  $\mu$ g. Concentration 1 mg/ml.

Alternative CUL3 matched antibody pairs: MP00599-1, MP00599-2, MP00599-3

Unconjugated rabbit recombinant monoclonal antibody pair in PBS only storage buffer at a concentration of 1 mg/mL, ready for conjugation. Created using Proteintech's proprietary in-house recombinant technology. Recombinant production enables unrivalled batch-to-batch consistency, easy scale-up, and future security of supply.

Matched antibody pairs are designed for use in a variety of assays and platforms that require matched antibody pairs.

Antibody use should be optimized for each application and assay.

## Storage

Storage:

Store at -80°C.

**The product is shipped with ice packs. Upon receipt, store it immediately at -80°C**

Storage buffer:

PBS only

For technical support and original validation data for this product please contact:

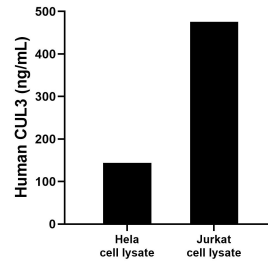
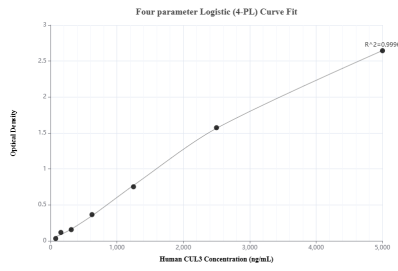
T: 4006900926

E: Proteintech-CN@ptglab.com

W: ptgcn.com

**This product is exclusively available under Proteintech Group brand and is not available to purchase from any other manufacturer.**

## Selected Validation Data



Sandwich ELISA standard curve of MP00599-4, Human CUL3 Recombinant Matched Antibody Pair - PBS only. 83619-7-PBS was coated to a plate as the capture antibody and incubated with serial dilutions of standard Ag1555. 83619-1-PBS was HRP conjugated as the detection antibody. Range: 1.25-80 ng/mL

HeLa and Jurkat cell lysates were measured. The human CUL3 concentration of detected samples was determined to be 144.2 ng/mL (based on a 1.2 mg/mL extract load) in HeLa cell lysate and 475.5 ng/mL (based on a 1.0 mg/mL extract load) in Jurkat cell lysate.