

PD-1/CD279 Recombinant Matched Antibody Pair, PBS Only

Catalog Number:MP00612-4

Capture Antibody Information

Catalog Number:
83632-5-PBS

Host:
Rabbit

Isotype:
IgG

Purification Method:
Protein A purification

Clone ID:
240724C5

Reactivity:
human

GenBank:
BC074740

Conjugate:
Unconjugated

Full name:
programmed cell death 1

Gene ID:
5133

Detection Antibody Information

Catalog Number:
83632-4-PBS

Host:
Rabbit

Isotype:
IgG

Purification Method:
Protein A purification

Clone ID:
240724G9

Reactivity:
human

GenBank:
BC074740

Conjugate:
Unconjugated

Full name:
programmed cell death 1

Gene ID:
5133

Applications

Tested Applications:
Sandwich ELISA

Range:
31.25-2000 pg/mL (Sandwich ELISA)

Recommended Dilutions:
It is recommended that this reagent should be titrated in each testing system to obtain optimal results.

Product Information

MP00612-4 targets PD-1/CD279 in immunoassays as a matched antibody pair. Validated in Sandwich ELISA.

Capture antibody: PD-1/CD279 Recombinant antibody, PBS Only (Capture) 83632-5-PBS (240724C5). 100 μ g. Concentration 1 mg/ml.

Detection antibody: PD-1/CD279 Recombinant antibody, PBS Only (Detector) 83632-4-PBS (240724G9). 100 μ g. Concentration 1 mg/ml.

Alternative PD-1/CD279 matched antibody pairs: MP00612-1, MP00612-2, MP00612-3

Unconjugated rabbit recombinant monoclonal antibody pair in PBS only storage buffer at a concentration of 1 mg/mL, ready for conjugation. Created using Proteintech's proprietary in-house recombinant technology. Recombinant production enables unrivalled batch-to-batch consistency, easy scale-up, and future security of supply.

Matched antibody pairs are designed for use in a variety of assays and platforms that require matched antibody pairs.

Antibody use should be optimized for each application and assay.

Storage

Storage:

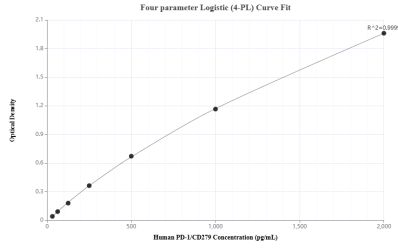
Store at -80°C.

The product is shipped with ice packs. Upon receipt, store it immediately at -80°C

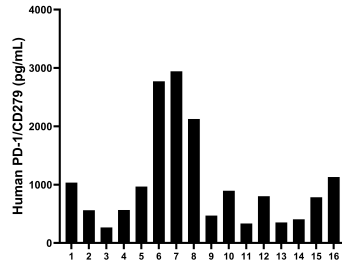
Storage buffer:

PBS only

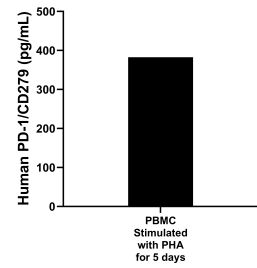
Selected Validation Data



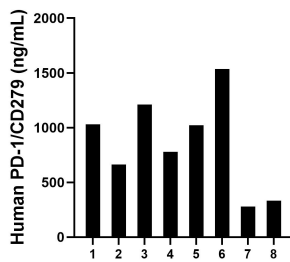
Sandwich ELISA standard curve of MP00612-4, Human PD-1/CD279 Recombinant Matched Antibody Pair - PBS only. 83632-5-PBS was coated to a plate as the capture antibody and incubated with serial dilutions of standard Eg0974. 83632-4-PBS was HRP conjugated as the detection antibody. Range: 31.25-2000 pg/mL



Serum of sixteen individual healthy human donors was measured. The human PD-1/CD279 concentration of detected samples was determined to be 1,025.5 pg/mL with a range of 265.2 - 2,943.1 pg/mL



For the PBMC supernatant cultured for 5 days, the mean human PD-1/CD279 concentration was determined to be 382.5 pg/mL in PHA stimulated PBMC supernatant.



Urine of eight individual healthy human was measured. The PD-1/CD279 concentration of detected samples was determined to be 856.9 pg/mL with a range of 280.3 - 1,536.5 pg/mL