

For Research Use Only

# SLC5A8 Recombinant Matched Antibody Pair, PBS Only



Catalog Number:MP00625-1

## Capture Antibody Information

**Catalog Number:**  
83652-1-PBS  
**Host:**  
Rabbit  
**Isotype:**  
IgG  
**Purification Method:**  
Protein A purification

**Clone ID:**  
240592B3  
**Reactivity:**  
Human  
**GenBank:**  
BC110492  
**Immunogen Catalog Number:**  
Ag30183

**Conjugate:**  
Unconjugated  
**Full name:**  
solute carrier family 5 (iodide transporter), member 8  
**Gene ID:**  
160728

## Detection Antibody Information

**Catalog Number:**  
83652-2-PBS  
**Host:**  
Rabbit  
**Isotype:**  
IgG  
**Purification Method:**  
Protein A purification

**Clone ID:**  
240592F10  
**Reactivity:**  
Human  
**GenBank:**  
BC110492  
**Immunogen Catalog Number:**  
Ag30183

**Conjugate:**  
Unconjugated  
**Full name:**  
solute carrier family 5 (iodide transporter), member 8  
**Gene ID:**  
160728

## Applications

**Tested Applications:**  
Cytometric bead array

**Range:**  
0.78-100 ng/mL (Cytometric Bead Array)

**Recommended Dilutions:**  
It is recommended that this reagent should be titrated in each testing system to obtain optimal results.

## Product Information

MP00625-1 targets SLC5A8 in immunoassays as a matched antibody pair. Validated in Cytometric bead array.

Capture antibody: SLC5A8 Recombinant antibody, PBS Only (Capture) 83652-1-PBS (240592B3). 100  $\mu$ g. Concentration 1 mg/ml.

Detection antibody: SLC5A8 Recombinant antibody, PBS Only (Detector) 83652-2-PBS (240592F10). 100  $\mu$ g. Concentration 1 mg/ml.

Unconjugated rabbit recombinant monoclonal antibody pair in PBS only storage buffer at a concentration of 1 mg/mL, ready for conjugation. Created using Proteintech's proprietary in-house recombinant technology. Recombinant production enables unrivalled batch-to-batch consistency, easy scale-up, and future security of supply.

Matched antibody pairs are designed for use in a variety of assays and platforms that require matched antibody pairs.

Antibody use should be optimized for each application and assay.

## Storage

**Storage:**  
Store at -80°C.  
**Storage buffer:**  
PBS only

For technical support and original validation data for this product please contact:

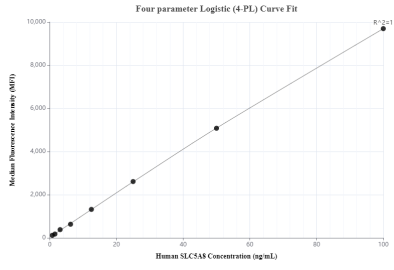
T: 4006900926

E: [Proteintech-CN@ptgcn.com](mailto:Proteintech-CN@ptgcn.com)

W: [ptgcn.com](http://ptgcn.com)

**This product is exclusively available under Proteintech Group brand and is not available to purchase from any other manufacturer.**

## Selected Validation Data



Cytometric bead array standard curve of MP00625-1, SLC5A8 Recombinant Matched Antibody Pair, PBS Only. Capture antibody: 83652-1-PBS. Detection antibody: 83652-2-PBS. Standard: Ag30183. Range: 0.78-100 ng/mL