

For Research Use Only

SYT1 Recombinant Matched Antibody Pair, PBS Only



Catalog Number:MP00633-4

Capture Antibody Information

Catalog Number:
83637-1-PBS

Host:
Rabbit

Isotype:
IgG

Purification Method:
Protein A purification

Clone ID:
240589D9

Reactivity:
human

GenBank:
BC058917

Immunogen Catalog Number:
Ag5970

Conjugate:
Unconjugated

Full name:
synaptotagmin I

Gene ID:
6857

Detection Antibody Information

Catalog Number:
83637-5-PBS

Host:
Rabbit

Isotype:
IgG

Purification Method:
Protein A purification

Clone ID:
240589C2

Reactivity:
human

GenBank:
BC058917

Immunogen Catalog Number:
Ag5970

Conjugate:
Unconjugated

Full name:
synaptotagmin I

Gene ID:
6857

Applications

Tested Applications:
Sandwich ELISA

Range:
23.4-1500 pg/mL (Sandwich ELISA)

Recommended Dilutions:
It is recommended that this reagent should be titrated in each testing system to obtain optimal results.

Product Information

MP00633-4 targets SYT1 in immunoassays as a matched antibody pair. Validated in Sandwich ELISA.

Capture antibody: SYT1 Recombinant antibody, PBS Only (Capture/Detector) 83637-1-PBS (240589D9). 100 µg. Concentration 1 mg/ml.

Detection antibody: SYT1 Recombinant antibody, PBS Only (Detector) 83637-5-PBS (240589C2). 100 µg. Concentration 1 mg/ml.

Alternative SYT1 matched antibody pairs: MP00633-1, MP00633-2, MP00633-3

Unconjugated rabbit recombinant monoclonal antibody pair in PBS only storage buffer at a concentration of 1 mg/mL, ready for conjugation. Created using Proteintech's proprietary in-house recombinant technology. Recombinant production enables unrivalled batch-to-batch consistency, easy scale-up, and future security of supply.

Matched antibody pairs are designed for use in a variety of assays and platforms that require matched antibody pairs.

Antibody use should be optimized for each application and assay.

Storage

Storage:

Store at -80°C.

The product is shipped with ice packs. Upon receipt, store it immediately at -80°C

Storage buffer:

PBS only

For technical support and original validation data for this product please contact:

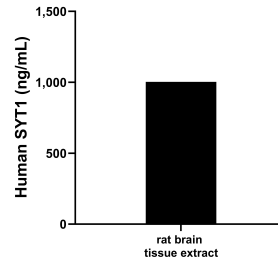
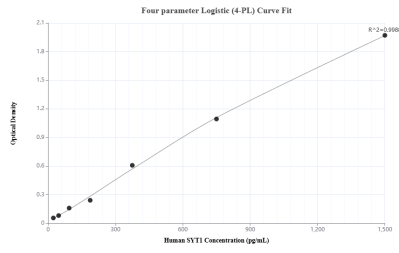
T: 4006900926

E: Proteintech-CN@ptglab.com

W: ptgcn.com

This product is exclusively available under Proteintech Group brand and is not available to purchase from any other manufacturer.

Selected Validation Data



Sandwich ELISA standard curve of MP00633-4, Human SYT1 Recombinant Matched Antibody Pair - PBS only. 83637-1-PBS was coated to a plate as the capture antibody and incubated with serial dilutions of standard Ag5970. 83637-5-PBS was HRP conjugated as the detection antibody. Range: 23.4-1500 pg/mL

The mean human SYT1 concentration was determined to be 1,002.8 ng/mL in rat brain tissue extract based on a 3.0 mg/mL extract load.