

DLAT Recombinant Matched Antibody Pair, PBS Only

Catalog Number:MP00635-1

Capture Antibody Information

Catalog Number:
83654-1-PBS
Host:
Rabbit
Isotype:
IgG
Purification Method:
Protein A purification

Clone ID:
240713C3
Reactivity:
Human
GenBank:
BC039084
Immunogen Catalog Number:
Ag22831

Conjugate:
Unconjugated
Full name:
dihydroliipoamide S-acetyltransferase
Gene ID:
1737

Detection Antibody Information

Catalog Number:
83654-2-PBS
Host:
Rabbit
Isotype:
IgG
Purification Method:
Protein A purification

Clone ID:
240713D9
Reactivity:
Human
GenBank:
BC039084
Immunogen Catalog Number:
Ag22831

Conjugate:
Unconjugated
Full name:
dihydroliipoamide S-acetyltransferase
Gene ID:
1737

Applications

Tested Applications:
Cytometric bead array

Range:
0.313-40 ng/mL (Cytometric Bead Array)

Recommended Dilutions:
It is recommended that this reagent should be titrated in each testing system to obtain optimal results.

Product Information

MP00635-1 targets DLAT in immunoassays as a matched antibody pair. Validated in Cytometric bead array.

Capture antibody: DLAT Recombinant antibody, PBS Only (Capture/Detector) 83654-1-PBS (240713C3). 100 µg. Concentration 1 mg/ml.

Detection antibody: DLAT Recombinant antibody, PBS Only (Detector) 83654-2-PBS (240713D9). 100 µg. Concentration 1 mg/ml.

Alternative DLAT matched antibody pairs: MP00635-2, MP00635-3

Unconjugated rabbit recombinant monoclonal antibody pair in PBS only storage buffer at a concentration of 1 mg/mL, ready for conjugation. Created using Proteintech's proprietary in-house recombinant technology. Recombinant production enables unrivalled batch-to-batch consistency, easy scale-up, and future security of supply.

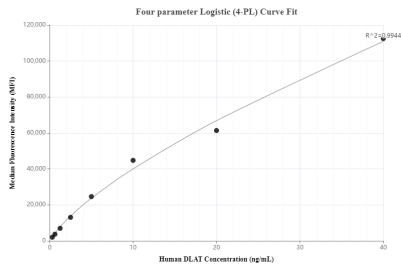
Matched antibody pairs are designed for use in a variety of assays and platforms that require matched antibody pairs.

Antibody use should be optimized for each application and assay.

Storage

Storage:
Store at -80°C.
Storage buffer:
PBS only

Selected Validation Data



Cytometric bead array standard curve of MP00635-1, DLAT Recombinant Matched Antibody Pair, PBS Only. Capture antibody: 83654-1-PBS. Detection antibody: 83654-2-PBS. Standard: Ag22831. Range: 0.313-40 ng/mL