

For Research Use Only

# IL18BP Recombinant Matched Antibody Pair, PBS Only



Catalog Number:MP00670-4

## Capture Antibody Information

Catalog Number:  
83692-2-PBS

Host:  
Rabbit

Isotype:  
IgG

Purification Method:  
Protein A purification

Clone ID:  
240711G11

Reactivity:  
human

GenBank:  
BC044215

Conjugate:  
Unconjugated

Full name:  
interleukin 18 binding protein

Gene ID:  
10068

## Detection Antibody Information

Catalog Number:  
83692-5-PBS

Host:  
Rabbit

Isotype:  
IgG

Purification Method:  
Protein A purification

Clone ID:  
240711F1

Reactivity:  
human

GenBank:  
BC044215

Conjugate:  
Unconjugated

Full name:  
interleukin 18 binding protein

Gene ID:  
10068

## Applications

Tested Applications:  
Sandwich ELISA

Range:  
0.156-10 ng/mL (Sandwich ELISA)

Recommended Dilutions:  
It is recommended that this reagent should be titrated in each testing system to obtain optimal results.

## Product Information

MP00670-4 targets IL18BP in immunoassays as a matched antibody pair. Validated in Sandwich ELISA.

Capture antibody: IL18BP Recombinant antibody, PBS Only (Capture) 83692-2-PBS (240711G11). 100  $\mu$ g. Concentration 1 mg/ml.

Detection antibody: IL18BP Recombinant antibody, PBS Only (Detector) 83692-5-PBS (240711F1). 100  $\mu$ g. Concentration 1 mg/ml.

Alternative IL18BP matched antibody pairs: MP00670-1, MP00670-2, MP00670-3

Unconjugated rabbit recombinant monoclonal antibody pair in PBS only storage buffer at a concentration of 1 mg/mL, ready for conjugation. Created using Proteintech's proprietary in-house recombinant technology. Recombinant production enables unrivalled batch-to-batch consistency, easy scale-up, and future security of supply.

Matched antibody pairs are designed for use in a variety of assays and platforms that require matched antibody pairs.

Antibody use should be optimized for each application and assay.

## Storage

Storage:

Store at -80°C.

**The product is shipped with ice packs. Upon receipt, store it immediately at -80°C**

Storage buffer:

PBS only

For technical support and original validation data for this product please contact:

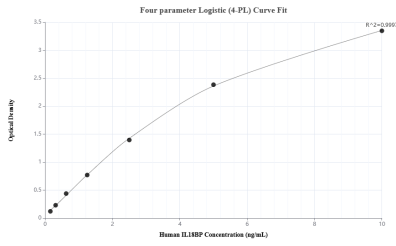
T: 4006900926

E: [Proteintech-CN@ptglab.com](mailto:Proteintech-CN@ptglab.com)

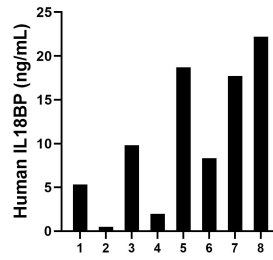
W: [ptgcn.com](http://ptgcn.com)

**This product is exclusively available under Proteintech Group brand and is not available to purchase from any other manufacturer.**

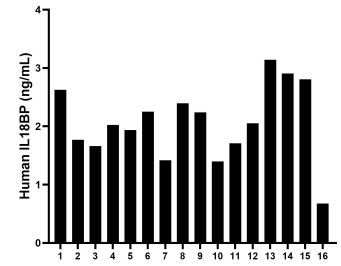
## Selected Validation Data



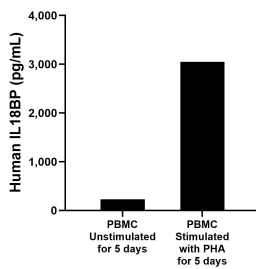
Sandwich ELISA standard curve of MP00670-4, Human IL18BP Recombinant Matched Antibody Pair - PBS only. 83692-2-PBS was coated to a plate as the capture antibody and incubated with serial dilutions of standard Eg1147. 83692-5-PBS was HRP conjugated as the detection antibody. Range: 0.156-10 ng/mL



Urine of eight individual healthy human donors was measured. The human IL18BP concentration of detected samples was determined to be 10.57 ng/mL with a range of 0.49 - 22.19 ng/mL



Serum of sixteen individual healthy human donors was measured. The human IL18BP concentration of detected samples was determined to be 2.06 ng/mL with a range of 0.68 - 3.14 ng/mL



Human peripheral blood mononuclear cells (PBMC) ( $1 \times 10^6$  cells/mL) were cultured in DMEM supplemented with 8% fetal bovine serum,  $5 \mu\text{M}$   $\beta$ -mercaptoethanol, 2 mM L-glutamine, 100 U/mL penicillin, and 100  $\mu\text{g/mL}$  streptomycin sulfate. Cells were cultured unstimulated or stimulated with  $10 \mu\text{g/mL}$  PHA for 5 days. Aliquots of the cell culture supernates were removed and assayed for levels of human IL18BP.