

For Research Use Only

B2M Recombinant Matched Antibody Pair, PBS Only



Catalog Number:MP00673-3

Capture Antibody Information

Catalog Number: 83683-1-PBS	Clone ID: 240660B1	Conjugate: Unconjugated
Host: Rabbit	Reactivity: human	Full name: beta-2-microglobulin
Isotype: IgG	GenBank: BC032589	Gene ID: 567
Purification Method: Protein A purification	Immunogen Catalog Number: Ag4433	

Detection Antibody Information

Catalog Number: 83683-5-PBS	Clone ID: 240660B3	Conjugate: Unconjugated
Host: Rabbit	Reactivity: human	Full name: beta-2-microglobulin
Isotype: IgG	GenBank: BC032589	Gene ID: 567
Purification Method: Protein A purification	Immunogen Catalog Number: Ag4433	

Applications

Tested Applications: Sandwich ELISA	Range: 0.625-40 ng/mL (Sandwich ELISA)	Recommended Dilutions: It is recommended that this reagent should be titrated in each testing system to obtain optimal results.
---	--	---

Product Information

MP00673-3 targets B2M in immunoassays as a matched antibody pair. Validated in Sandwich ELISA.

Capture antibody: B2M Recombinant antibody, PBS Only (Capture) 83683-1-PBS (240660B1). 100 µg. Concentration 1 mg/ml.

Detection antibody: B2M Recombinant antibody, PBS Only (Detector) 83683-5-PBS (240660B3). 100 µg. Concentration 1 mg/ml.

Alternative B2M matched antibody pairs: MP00673-1, MP00673-2, MP50108-1

Unconjugated rabbit recombinant monoclonal antibody pair in PBS only storage buffer at a concentration of 1 mg/mL, ready for conjugation. Created using Proteintech's proprietary in-house recombinant technology. Recombinant production enables unrivalled batch-to-batch consistency, easy scale-up, and future security of supply.

Matched antibody pairs are designed for use in a variety of assays and platforms that require matched antibody pairs.

Antibody use should be optimized for each application and assay.

Storage

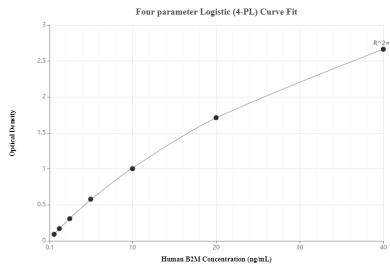
Storage:
Store at -80°C.
The product is shipped with ice packs. Upon receipt, store it immediately at -80°C

Storage buffer:
PBS only

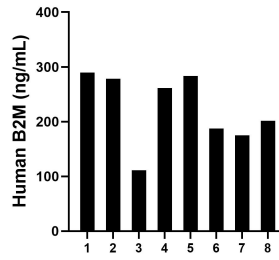
For technical support and original validation data for this product please contact:
T: 4006900926 E: Proteintech-CN@ptglab.com W: ptgcn.com

This product is exclusively available under Proteintech Group brand and is not available to purchase from any other manufacturer.

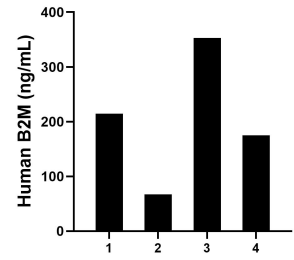
Selected Validation Data



Sandwich ELISA standard curve of MP00673-3, human B2M Recombinant Matched Antibody Pair - PBS only. 83683-1-PBS was coated to a plate as the capture antibody and incubated with serial dilutions of standard Ag4433. 83683-5-PBS was HRP conjugated as the detection antibody. Range: 0.625-40 ng/mL



Serum of eight individual healthy human donors was measured. The B2M concentration of detected samples was determined to be 223.48 ng/mL with a range of 111.44-289.89 ng/mL.



Urine of eight individual healthy human donors was measured. The B2M concentration of detected samples was determined to be 202.46 ng/mL with a range of 67.46-352.77 ng/mL.