

For Research Use Only

# B2M Recombinant Matched Antibody Pair, PBS Only



Catalog Number: MP00673-4

## Capture Antibody Information

Catalog Number:  
83683-11-PBS

Host:  
Rabbit

Isotype:  
IgG

Purification Method:  
Protein A purification

Clone ID:  
241308G10

Reactivity:  
human

GenBank:  
BC032589

Conjugate:  
Unconjugated

Full name:  
beta-2-microglobulin

Gene ID:  
567

## Detection Antibody Information

Catalog Number:  
83683-10-PBS

Host:  
Rabbit

Isotype:  
IgG

Purification Method:  
Protein A purification

Clone ID:  
241309E12

Reactivity:  
human

GenBank:  
BC032589

Conjugate:  
Unconjugated

Full name:  
beta-2-microglobulin

Gene ID:  
567

## Applications

Tested Applications:  
Sandwich ELISA

Range:  
0.195-12.5 ng/mL (Sandwich ELISA)

Recommended Dilutions:  
It is recommended that this reagent should be titrated in each testing system to obtain optimal results.

## Product Information

MP00673-4 targets B2M in immunoassays as a matched antibody pair. Validated in Sandwich ELISA.

Capture antibody: B2M Recombinant antibody, PBS Only (Capture) 83683-11-PBS (241308G10). 100 µg. Concentration 1 mg/mL.

Detection antibody: B2M Recombinant antibody, PBS Only (Detector) 83683-10-PBS (241309E12). 100 µg. Concentration 1 mg/mL.

Unconjugated rabbit recombinant monoclonal antibody pair in PBS only storage buffer at a concentration of 1 mg/mL, ready for conjugation. Created using Proteintech's proprietary in-house recombinant technology. Recombinant production enables unrivalled batch-to-batch consistency, easy scale-up, and future security of supply.

Matched antibody pairs are designed for use in a variety of assays and platforms that require matched antibody pairs.

Antibody use should be optimized for each application and assay.

## Storage

Storage:  
Store at -80°C.

The product is shipped with ice packs. Upon receipt, store it immediately at -80°C

Storage buffer:  
PBS only

For technical support and original validation data for this product please contact:

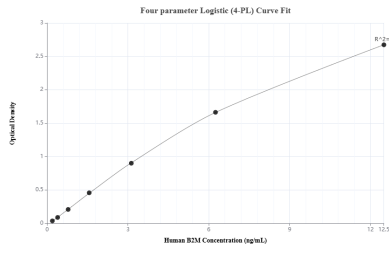
T: 4006900926

E: Proteintech-CN@ptglab.com

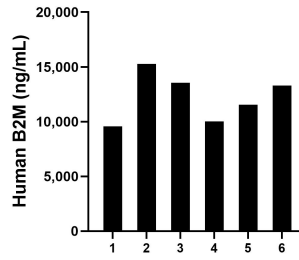
W: ptgcn.com

This product is exclusively available under Proteintech Group brand and is not available to purchase from any other manufacturer.

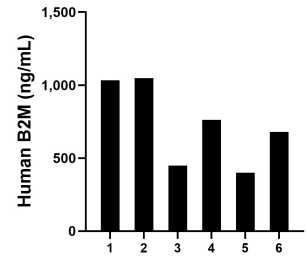
## Selected Validation Data



Sandwich ELISA standard curve of MP00673-4, Human B2M Recombinant Matched Antibody Pair - PBS only. 83683-11-PBS was coated to a plate as the capture antibody and incubated with serial dilutions of standard Eg2284. 83683-10-PBS was HRP conjugated as the detection antibody. Range: 0.195-12.5 ng/mL



Serum of six individual healthy human donors was measured. The human B2M concentration of detected samples was determined to be 12,201.96 ng/mL with a range of 9,574.44 - 15,258.19 ng/mL.



Urine of six individual healthy human donors was measured. The human B2M concentration of detected samples was determined to be 728.33 ng/mL with a range of 399.66 - 1,048.75 ng/mL.