

For Research Use Only

HSP47/SERPINH1 Recombinant Matched Antibody Pair, PBS Only



Catalog Number:MP00677-2

Capture Antibody Information

Catalog Number:
83689-4-PBS
Host:
Rabbit
Isotype:
IgG
Purification Method:
Protein A purification

Clone ID:
240752F2
Reactivity:
human, mouse
GenBank:
NM_001235.5

Conjugate:
Unconjugated
Full name:
serpin peptidase inhibitor, clade H (heat shock protein 47), member 1, (collagen binding protein 1)
Gene ID:
871

Detection Antibody Information

Catalog Number:
83689-3-PBS
Host:
Rabbit
Isotype:
IgG
Purification Method:
Protein A purification

Clone ID:
240752F6
Reactivity:
human, mouse
GenBank:
NM_001235.5

Conjugate:
Unconjugated
Full name:
serpin peptidase inhibitor, clade H (heat shock protein 47), member 1, (collagen binding protein 1)
Gene ID:
871

Applications

Tested Applications:
Sandwich ELISA

Range:
0.23-15 ng/mL (Sandwich ELISA)

Recommended Dilutions:
It is recommended that this reagent should be titrated in each testing system to obtain optimal results.

Product Information

MP00677-2 targets HSP47/SERPINH1 in immunoassays as a matched antibody pair. Validated in Sandwich ELISA.

Capture antibody: HSP47/SERPINH1 Recombinant antibody, PBS Only (Capture) 83689-4-PBS (240752F2). 100 µg. Concentration 1 mg/ml.

Detection antibody: HSP47/SERPINH1 Recombinant antibody, PBS Only (Detector) 83689-3-PBS (240752F6). 100 µg. Concentration 1 mg/ml.

Alternative HSP47/SERPINH1 matched antibody pairs: MP00677-1

Unconjugated rabbit recombinant monoclonal antibody pair in PBS only storage buffer at a concentration of 1 mg/mL, ready for conjugation. Created using Proteintech's proprietary in-house recombinant technology. Recombinant production enables unrivalled batch-to-batch consistency, easy scale-up, and future security of supply.

Matched antibody pairs are designed for use in a variety of assays and platforms that require matched antibody pairs.

Antibody use should be optimized for each application and assay.

Storage

Storage:
Store at -80°C.
The product is shipped with ice packs. Upon receipt, store it immediately at -80°C
Storage buffer:
PBS only

For technical support and original validation data for this product please contact:

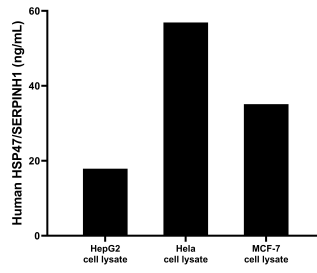
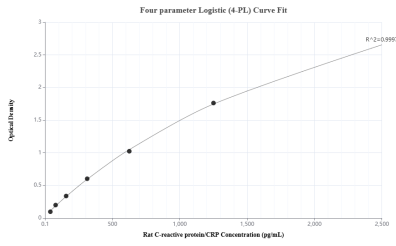
T: 4006900926

E: Proteintech-CN@ptglab.com

W: ptgcn.com

This product is exclusively available under Proteintech Group brand and is not available to purchase from any other manufacturer.

Selected Validation Data



Sandwich ELISA standard curve of MP00677-2, Human HSP47/SERPINH1 Recombinant Matched Antibody Pair - PBS only. 83689-4-PBS was coated to a plate as the capture antibody and incubated with serial dilutions of standard Eg1201. 83689-3-PBS was HRP conjugated as the detection antibody. Range: 0.23-15 ng/mL

HepG2, HeLa and MCF-7 cells were cultured in DMEM supplemented with 10% fetal bovine serum, 100 U/mL penicillin, and 100 μ g/mL streptomycin sulfate. Aliquots of the cell culture supernates were removed. Cells were lysed and assayed for human HSP47/SERPINH1. Human HSP47/SERPINH1 in HepG2 cell lysate measured 17.9 ng/mL. Human HSP47/SERPINH1 in HeLa cell lysate measured 56.9 ng/mL. Human HSP47/SERPINH1 in MCF-7 cell lysate