

# MARS Recombinant Matched Antibody Pair, PBS Only

Catalog Number: MP00679-1

## Capture Antibody Information

<b>Catalog Number:</b> 83690-4-PBS	<b>Clone ID:</b> 240648G4	<b>Conjugate:</b> Unconjugated
<b>Host:</b> Rabbit	<b>Reactivity:</b> human, mouse, rat	<b>Full name:</b> methionyl-tRNA synthetase
<b>Isotype:</b> IgG	<b>GenBank:</b> BC002384	<b>Gene ID:</b> 4141
<b>Purification Method:</b> Protein A purification	<b>Immunogen Catalog Number:</b> Ag6619	

## Detection Antibody Information

<b>Catalog Number:</b> 83690-3-PBS	<b>Clone ID:</b> 240648F10	<b>Conjugate:</b> Unconjugated
<b>Host:</b> Rabbit	<b>Reactivity:</b> human	<b>Full name:</b> methionyl-tRNA synthetase
<b>Isotype:</b> IgG	<b>GenBank:</b> BC002384	<b>Gene ID:</b> 4141
<b>Purification Method:</b> Protein A purification	<b>Immunogen Catalog Number:</b> Ag6619	

## Applications

<b>Tested Applications:</b> Cytometric bead array, Sandwich ELISA	<b>Range:</b> 1.56-100 ng/mL (Cytometric Bead Array) 39.1-2500 pg/mL (Sandwich ELISA)	<b>Recommended Dilutions:</b> It is recommended that this reagent should be titrated in each testing system to obtain optimal results.
--	---	---

## Product Information

MP00679-1 targets MARS in immunoassays as a matched antibody pair. Validated in Cytometric bead array, Sandwich ELISA.

Capture antibody: MARS Recombinant antibody, PBS Only (Capture) 83690-4-PBS (240648G4). 100 µg. Concentration 1 mg/ml.

Detection antibody: MARS Recombinant antibody, PBS Only (Detector) 83690-3-PBS (240648F10). 100 µg. Concentration 1 mg/ml.

Alternative MARS matched antibody pairs: MP00679-2, MP00679-3

Unconjugated rabbit recombinant monoclonal antibody pair in PBS only storage buffer at a concentration of 1 mg/mL, ready for conjugation. Created using Proteintech's proprietary in-house recombinant technology. Recombinant production enables unrivalled batch-to-batch consistency, easy scale-up, and future security of supply.

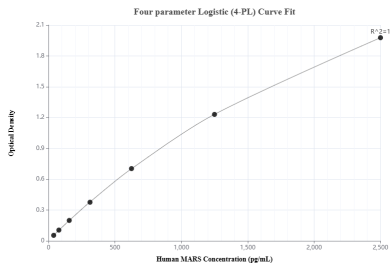
Matched antibody pairs are designed for use in a variety of assays and platforms that require matched antibody pairs.

Antibody use should be optimized for each application and assay.

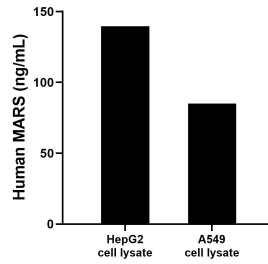
## Storage

**Storage:**  
Store at -80°C.  
**The product is shipped with ice packs. Upon receipt, store it immediately at -80°C**  
**Storage buffer:**  
PBS only

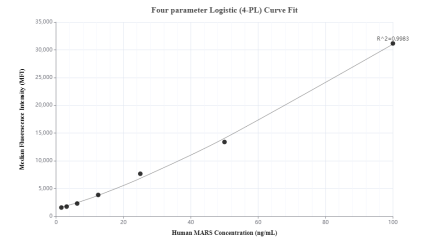
## Selected Validation Data



Sandwich ELISA standard curve of MP00679-1, Human MARS Recombinant Matched Antibody Pair - PBS only. 83690-4-PBS was coated to a plate as the capture antibody and incubated with serial dilutions of standard Ag6619. 83690-3-PBS was HRP conjugated as the detection antibody. Range: 39.1-2500 pg/mL



HepG2 and A549 cell lysates were measured. The human MARS concentration of detected samples was determined to be 139.60 ng/mL (based on a 3.00 mg/mL extract load) in HepG2 cell lysate and 85.10 ng/mL (based on a 3.00 mg/mL extract load) in A549 cell lysate.



Cytometric bead array standard curve of MP00679-1, MARS Recombinant Matched Antibody Pair, PBS Only. Capture antibody: 83690-4-PBS. Detection antibody: 83690-3-PBS. Standard: Ag6619. Range: 1.56-100 ng/mL