

For Research Use Only

SH3GLB1 Recombinant Matched Antibody Pair, PBS Only



Catalog Number:MP00691-2

Capture Antibody Information

Catalog Number:
83715-1-PBS

Host:
Rabbit

Isotype:
IgG

Purification Method:
Protein A purification

Clone ID:
240623E1

Reactivity:
Human

GenBank:
BC007455

Immunogen Catalog Number:
Ag7710

Conjugate:
Unconjugated

Full name:
SH3-domain GRB2-like endophilin B1

Gene ID:
51100

Detection Antibody Information

Catalog Number:
83715-3-PBS

Host:
Rabbit

Isotype:
IgG

Purification Method:
Protein A purification

Clone ID:
240623E6

Reactivity:
Human

GenBank:
BC007455

Immunogen Catalog Number:
Ag7710

Conjugate:
Unconjugated

Full name:
SH3-domain GRB2-like endophilin B1

Gene ID:
51100

Applications

Tested Applications:
Cytometric bead array

Range:
1.25-80 ng/mL (Cytometric Bead Array)

Recommended Dilutions:
It is recommended that this reagent should be titrated in each testing system to obtain optimal results.

Product Information

MP00691-2 targets SH3GLB1 in immunoassays as a matched antibody pair. Validated in Cytometric bead array.

Capture antibody: SH3GLB1 Recombinant antibody, PBS Only (Capture) 83715-1-PBS (240623E1). 100 µg. Concentration 1 mg/ml.

Detection antibody: SH3GLB1 Recombinant antibody, PBS Only (Detector) 83715-3-PBS (240623E6). 100 µg. Concentration 1 mg/ml.

Alternative SH3GLB1 matched antibody pairs: MP00691-1

Unconjugated rabbit recombinant monoclonal antibody pair in PBS only storage buffer at a concentration of 1 mg/mL, ready for conjugation. Created using Proteintech's proprietary in-house recombinant technology. Recombinant production enables unrivalled batch-to-batch consistency, easy scale-up, and future security of supply.

Matched antibody pairs are designed for use in a variety of assays and platforms that require matched antibody pairs.

Antibody use should be optimized for each application and assay.

Storage

Storage:
Store at -80°C.
Storage buffer:
PBS only

For technical support and original validation data for this product please contact:

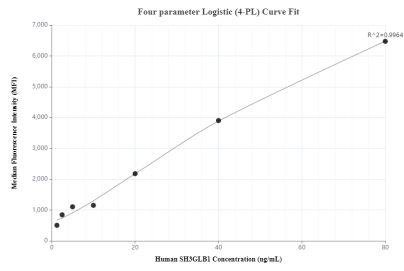
T: 4006900926

E: Proteintech-CN@ptglab.com

W: ptgcn.com

This product is exclusively available under Proteintech Group brand and is not available to purchase from any other manufacturer.

Selected Validation Data



Cytometric bead array standard curve of MP00691-2, SH3GLB1 Recombinant Matched Antibody Pair, PBS Only. Capture antibody: 83715-1-PBS. Detection antibody: 83715-3-PBS. Standard: Ag7710. Range: 1.25-80 ng/mL.