

For Research Use Only



Rat C-Reactive Protein/CRP Recombinant Matched Antibody Pair, PBS Only

Catalog Number:MP00692-1

Capture Antibody Information

Catalog Number:

83741-1-PBS

Host:

Rabbit

Isotype:

IgG

Purification Method:

Protein A purification

Clone ID:

240759D4

Reactivity:

rat

GenBank:

NM_017096.3

Conjugate:

Unconjugated

Full name:

C-reactive protein, pentraxin-related

Gene ID:

25419

Detection Antibody Information

Catalog Number:

83741-2-PBS

Host:

Rabbit

Isotype:

IgG

Purification Method:

Protein A purification

Clone ID:

240759E1

Reactivity:

rat

GenBank:

NM_017096.3

Conjugate:

Unconjugated

Full name:

C-reactive protein, pentraxin-related

Gene ID:

25419

Applications

Tested Applications:

Cytometric bead array

Range:

0.39-50 ng/mL (Cytometric Bead Array)

Recommended Dilutions:

It is recommended that this reagent should be titrated in each testing system to obtain optimal results.

Product Information

MP00692-1 targets C-Reactive Protein/CRP in immunoassays as a matched antibody pair. Validated in Cytometric bead array.

Capture antibody: Rat C-reactive protein Recombinant antibody, PBS Only (Capture) 83741-1-PBS (240759D4). 100 μ g. Concentration 1 mg/ml.

Detection antibody: Rat C-reactive protein Recombinant antibody, PBS Only (Detector) 83741-2-PBS (240759E1). 100 μ g. Concentration 1 mg/ml.

Alternative C-Reactive Protein/CRP matched antibody pairs: MP00692-2

Unconjugated rabbit recombinant monoclonal antibody pair in PBS only storage buffer at a concentration of 1 mg/mL, ready for conjugation. Created using Proteintech's proprietary in-house recombinant technology. Recombinant production enables unrivalled batch-to-batch consistency, easy scale-up, and future security of supply.

Matched antibody pairs are designed for use in a variety of assays and platforms that require matched antibody pairs.

Antibody use should be optimized for each application and assay.

Storage

Storage:

Store at -80°C.

The product is shipped with ice packs. Upon receipt, store it immediately at -80°C

Storage buffer:

PBS only

For technical support and original validation data for this product please contact:

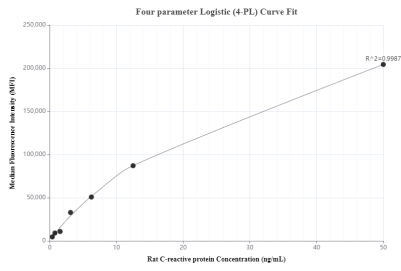
T: 4006900926

E: Proteintech-CN@ptglab.com

W: ptgcn.com

This product is exclusively available under Proteintech Group brand and is not available to purchase from any other manufacturer.

Selected Validation Data



Cytometric bead array standard curve of MP00692-1, RAT C-Reactive Protein/CRP Recombinant Matched Antibody Pair, PBS Only. Capture antibody: 83741-1-PBS. Detection antibody: 83741-2-PBS. Standard: Eg0942. Range: 0.39-50 ng/mL