

For Research Use Only



Rat C-Reactive Protein/CRP Recombinant Matched Antibody Pair, PBS Only

Catalog Number:MP00692-2

Capture Antibody Information

Catalog Number:

83741-5-PBS

Host:

Rabbit

Isotype:

IgG

Purification Method:

Protein A purification

Clone ID:

240759E4

Reactivity:

rat

GenBank:

NM_017096.3

Conjugate:

Unconjugated

Full name:

C-reactive protein, pentraxin-related

Gene ID:

25419

Detection Antibody Information

Catalog Number:

83741-4-PBS

Host:

Rabbit

Isotype:

IgG

Purification Method:

Protein A purification

Clone ID:

240759F6

Reactivity:

rat

GenBank:

NM_017096.3

Conjugate:

Unconjugated

Full name:

C-reactive protein, pentraxin-related

Gene ID:

25419

Applications

Tested Applications:

Sandwich ELISA

Range:

39.1-2500 pg/mL (Sandwich ELISA)

Recommended Dilutions:

It is recommended that this reagent should be titrated in each testing system to obtain optimal results.

Product Information

MP00692-2 targets C-Reactive Protein/CRP in immunoassays as a matched antibody pair. Validated in Sandwich ELISA.

Capture antibody: Rat C-reactive protein Recombinant antibody, PBS Only (Capture) 83741-5-PBS (240759E4). 100 μ g. Concentration 1 mg/ml.

Detection antibody: Rat C-reactive protein Recombinant antibody, PBS Only (Detector) 83741-4-PBS (240759F6). 100 μ g. Concentration 1 mg/ml.

Alternative C-Reactive Protein/CRP matched antibody pairs: MP00692-1

Unconjugated rabbit recombinant monoclonal antibody pair in PBS only storage buffer at a concentration of 1 mg/mL, ready for conjugation. Created using Proteintech's proprietary in-house recombinant technology. Recombinant production enables unrivalled batch-to-batch consistency, easy scale-up, and future security of supply.

Matched antibody pairs are designed for use in a variety of assays and platforms that require matched antibody pairs.

Antibody use should be optimized for each application and assay.

Storage

Storage:

Store at -80°C.

The product is shipped with ice packs. Upon receipt, store it immediately at -80°C

Storage buffer:

PBS only

For technical support and original validation data for this product please contact:

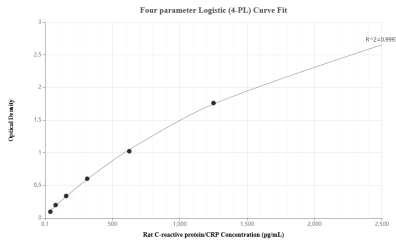
T: 4006900926

E: Proteintech-CN@ptglab.com

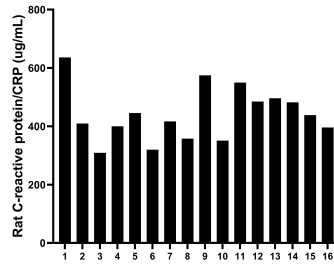
W: ptgcn.com

This product is exclusively available under Proteintech Group brand and is not available to purchase from any other manufacturer.

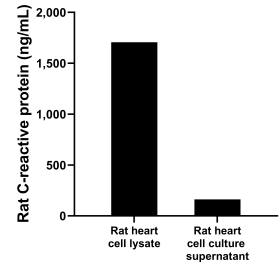
Selected Validation Data



Sandwich ELISA standard curve of MP00692-2, Rat C-reactive protein/CRP Recombinant Matched Antibody Pair - PBS only. 83741-5-PBS was coated to a plate as the capture antibody and incubated with serial dilutions of standard Eg0942. 83741-4-PBS was HRP conjugated as the detection antibody. Range: 39.1-2500 pg/mL



Serum of sixteen rats was measured. The rat C-reactive protein/CRP concentration of detected samples was determined to be 441.8 ug/mL with a range of 309.02 - 635.99 ug/mL.



Rat heart, cut into 1-2 mm pieces, was cultured in 25-30 mL of RPMI supplemented with 10% fetal bovine serum. The cell culture supernatant was removed, assayed for rat C-reactive protein, and measured 161.65 ng/mL. Cells were lysed, assayed for rat C-reactive protein, and measured 1,706.0465 ng/mL.