

For Research Use Only

# CSPG4 Recombinant Matched Antibody Pair, PBS Only



Catalog Number:MP00694-3

## Capture Antibody Information

Catalog Number:  
83716-5-PBS

Host:  
Rabbit

Isotype:  
IgG

Purification Method:  
Protein A purification

Clone ID:  
240733D1

Reactivity:  
human

GenBank:  
NM\_001897.5

Conjugate:  
Unconjugated

Full name:  
chondroitin sulfate proteoglycan 4

Gene ID:  
1464

## Detection Antibody Information

Catalog Number:  
83716-2-PBS

Host:  
Rabbit

Isotype:  
IgG

Purification Method:  
Protein A purification

Clone ID:  
240733F12

Reactivity:  
human

GenBank:  
NM\_001897.5

Conjugate:  
Unconjugated

Full name:  
chondroitin sulfate proteoglycan 4

Gene ID:  
1464

## Applications

Tested Applications:  
Sandwich ELISA

Range:  
0.156-10 ng/mL (Sandwich ELISA)

Recommended Dilutions:  
It is recommended that this reagent should be titrated in each testing system to obtain optimal results.

## Product Information

MP00694-3 targets CSPG4 in immunoassays as a matched antibody pair. Validated in Sandwich ELISA.

Capture antibody: CSPG4 Recombinant antibody, PBS Only (Capture) 83716-5-PBS (240733D1). 100  $\mu$ g. Concentration 1 mg/ml.

Detection antibody: CSPG4 Recombinant antibody, PBS Only (Detector) 83716-2-PBS (240733F12). 100  $\mu$ g. Concentration 1 mg/ml.

Alternative CSPG4 matched antibody pairs: MP00694-1, MP00694-2

Unconjugated rabbit recombinant monoclonal antibody pair in PBS only storage buffer at a concentration of 1 mg/mL, ready for conjugation. Created using Proteintech's proprietary in-house recombinant technology. Recombinant production enables unrivalled batch-to-batch consistency, easy scale-up, and future security of supply.

Matched antibody pairs are designed for use in a variety of assays and platforms that require matched antibody pairs.

Antibody use should be optimized for each application and assay.

## Storage

Storage:

Store at -80°C.

**The product is shipped with ice packs. Upon receipt, store it immediately at -80°C**

Storage buffer:

PBS only

For technical support and original validation data for this product please contact:

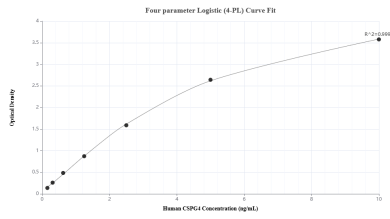
T: 4006900926

E: Proteintech-CN@ptglab.com

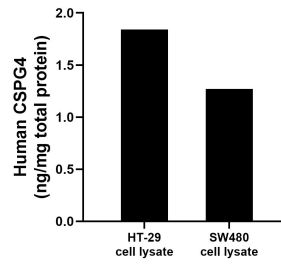
W: ptgcn.com

**This product is exclusively available under Proteintech Group brand and is not available to purchase from any other manufacturer.**

## Selected Validation Data



Sandwich ELISA standard curve of MP00694-3, Human CSPG4 Recombinant Matched Antibody Pair - PBS only. 83716-5-PBS was coated to a plate as the capture antibody and incubated with serial dilutions of standard Eg0201. 83716-2-PBS was HRP conjugated as the detection antibody. Range: 0.156-10 ng/mL



HT-29 cell lysate and SW480 cell lysate were measured. The human CSPG4 concentration was determined to be 1.84 ng/mg total protein in HT-29 cell lysate and 1.27 ng/mg total protein in SW480 cell lysate.