

# Cathepsin D Recombinant Matched Antibody Pair, PBS Only

Catalog Number: MP00695-4

## Capture Antibody Information

Catalog Number:  
83743-6-PBS

Host:  
Rabbit

Isotype:  
IgG

Purification Method:  
Protein A purification

Clone ID:  
240775A3

Reactivity:  
human

GenBank:  
NM\_001909.5

Conjugate:  
Unconjugated

Full name:  
cathepsin D

Gene ID:  
1509

## Detection Antibody Information

Catalog Number:  
83743-2-PBS

Host:  
Rabbit

Isotype:  
IgG

Purification Method:  
Protein A purification

Clone ID:  
240775E7

Reactivity:  
human

GenBank:  
NM\_001909.5

Conjugate:  
Unconjugated

Full name:  
cathepsin D

Gene ID:  
1509

## Applications

Tested Applications:  
Sandwich ELISA

Range:  
0.156-10 ng/mL (Sandwich ELISA)

Recommended Dilutions:  
It is recommended that this reagent should be titrated in each testing system to obtain optimal results.

## Product Information

MP00695-4 targets Cathepsin D in immunoassays as a matched antibody pair. Validated in Sandwich ELISA.

Capture antibody: Cathepsin D Recombinant antibody, PBS Only (Capture) 83743-6-PBS (240775A3). 100 µg. Concentration 1 mg/ml.

Detection antibody: Cathepsin D Recombinant antibody, PBS Only (Detector) 83743-2-PBS (240775E7). 100 µg. Concentration 1 mg/ml.

Alternative Cathepsin D matched antibody pairs: MP00695-1, MP00695-2, MP00695-3

Unconjugated rabbit recombinant monoclonal antibody pair in PBS only storage buffer at a concentration of 1 mg/mL, ready for conjugation. Created using Proteintech's proprietary in-house recombinant technology. Recombinant production enables unrivalled batch-to-batch consistency, easy scale-up, and future security of supply.

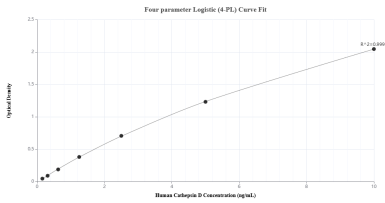
Matched antibody pairs are designed for use in a variety of assays and platforms that require matched antibody pairs.

Antibody use should be optimized for each application and assay.

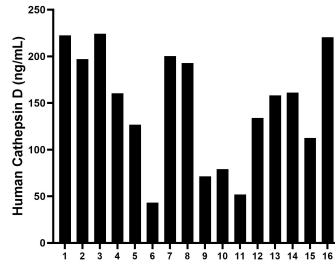
## Storage

Storage:  
Store at -80°C.  
**The product is shipped with ice packs. Upon receipt, store it immediately at -80°C**  
Storage buffer:  
PBS only

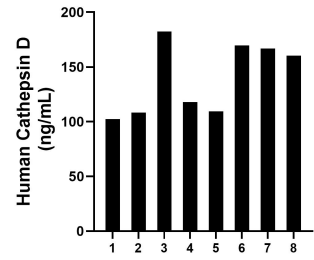
## Selected Validation Data



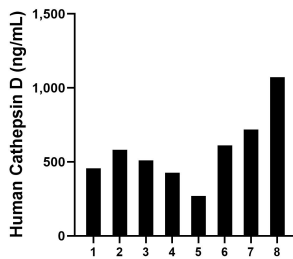
Sandwich ELISA standard curve of MP00695-4, Human Cathepsin D Recombinant Matched Antibody Pair - PBS only. 83743-6-PBS was coated to a plate as the capture antibody and incubated with serial dilutions of standard Eg1053. 83743-2-PBS was HRP conjugated as the detection antibody. Range: 0.156-10 ng/mL



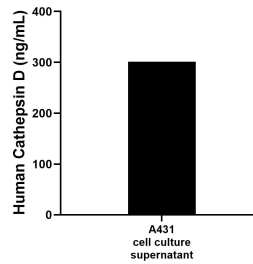
Serum of sixteen individual healthy human donors was measured. The human Cathepsin D concentration of detected samples was determined to be 147.3 ng/mL with a range of 43.2 - 224.2 ng/mL



Saliva of eight individual healthy human donors was measured. The human Cathepsin D concentration of detected samples was determined to be 139.6 ng/mL with a range of 102.4 - 182.3 ng/mL



Human milk of eight individual healthy human donors was measured. The human Cathepsin D concentration of detected samples was determined to be 580.4 ng/mL with a range of 270 - 1,071.8 ng/mL



For the A431 supernatant, the mean human Cathepsin D concentration was determined to be 301.05 ng/mL