

For Research Use Only

Mouse VCAM-1/CD106 Recombinant Matched Antibody Pair, PBS Only



Catalog Number:MP00701-4

Capture Antibody Information

Catalog Number:

83719-1-PBS

Host:

Rabbit

Isotype:

IgG

Purification Method:

Protein A purification

Clone ID:

240597B2

Reactivity:

mouse

GenBank:

CAA47989.1

Conjugate:

Unconjugated

Full name:

vascular cell adhesion molecule 1

Gene ID:

22329

Detection Antibody Information

Catalog Number:

83719-3-PBS

Host:

Rabbit

Isotype:

IgG

Purification Method:

Protein A purification

Clone ID:

240597D2

Reactivity:

mouse

GenBank:

CAA47989.1

Conjugate:

Unconjugated

Full name:

vascular cell adhesion molecule 1

Gene ID:

22329

Applications

Tested Applications:

Sandwich ELISA

Range:

46.88-3000 pg/mL (Sandwich ELISA)

Recommended Dilutions:

It is recommended that this reagent should be titrated in each testing system to obtain optimal results.

Product Information

MP00701-4 targets VCAM-1/CD106 in immunoassays as a matched antibody pair. Validated in Sandwich ELISA.

Capture antibody: Mouse VCAM-1/CD106 Recombinant antibody, PBS Only (Capture) 83719-1-PBS (240597B2). 100 μ g. Concentration 1 mg/ml.

Detection antibody: Mouse VCAM-1/CD106 Recombinant antibody, PBS Only (Capture/Detector) 83719-3-PBS (240597D2). 100 μ g. Concentration 1 mg/ml.

Alternative VCAM-1/CD106 matched antibody pairs: MP00701-1, MP00701-2, MP00701-3, MP01145-1, MP01145-2, MP01145-3

Unconjugated rabbit recombinant monoclonal antibody pair in PBS only storage buffer at a concentration of 1 mg/mL, ready for conjugation. Created using Proteintech's proprietary in-house recombinant technology. Recombinant production enables unrivalled batch-to-batch consistency, easy scale-up, and future security of supply.

Matched antibody pairs are designed for use in a variety of assays and platforms that require matched antibody pairs.

Antibody use should be optimized for each application and assay.

Storage

Storage:

Store at -80°C.

The product is shipped with ice packs. Upon receipt, store it immediately at -80°C

Storage buffer:

PBS only

For technical support and original validation data for this product please contact:

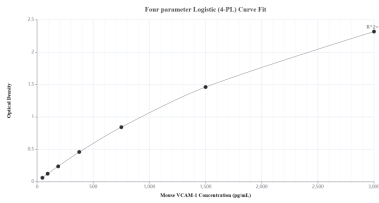
T: 4006900926

E: Proteintech-CN@ptglab.com

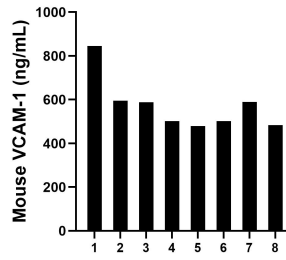
W: ptgcn.com

This product is exclusively available under Proteintech Group brand and is not available to purchase from any other manufacturer.

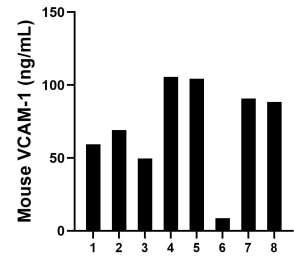
Selected Validation Data



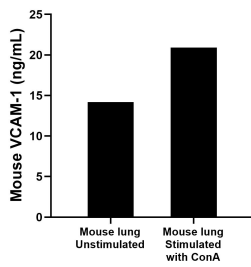
Sandwich ELISA standard curve of MP00701-4, Mouse VCAM-1/CD106 Recombinant Matched Antibody Pair - PBS only. 83719-1-PBS was coated to a plate as the capture antibody and incubated with serial dilutions of standard Eg0639. 83719-3-PBS was HRP conjugated as the detection antibody. Range: 46.88-3000 pg/mL



Serum of eight mice was measured. The VCAM-1 concentration of detected samples was determined to be 572.76 ng/mL with a range of 483.18-844.96 ng/mL



Urine of eight mice was measured. The VCAM-1 concentration of detected samples was determined to be 71.97 ng/mL with a range of 8.65-105.58 ng/mL



Mouse lung, cut into 1-2 mm pieces, was cultured for 3 days in 25-30 mL of RPMI supplemented with 10% fetal bovine serum and unstimulated or stimulated with 10 μ g/mL ConA. The mean VCAM-1 concentration was determined to be 14.2 ng/mL in unstimulated mouse lung superantant, 20.9 ng/mL in ConA stimulated mouse lung superantant.