

For Research Use Only

Mouse CD155/PVR Recombinant Matched Antibody Pair, PBS Only



Catalog Number: MP00705-2

Capture Antibody Information

Catalog Number:
83724-3-PBS

Host:
Rabbit

Isotype:
IgG

Purification Method:
Protein A purification

Clone ID:
240731E2

Reactivity:
mouse

GenBank:
NM_027514.2

Conjugate:
Unconjugated

Full name:
poliovirus receptor

Gene ID:
52118

Detection Antibody Information

Catalog Number:
83724-1-PBS

Host:
Rabbit

Isotype:
IgG

Purification Method:
Protein A purification

Clone ID:
240731A2

Reactivity:
mouse

GenBank:
NM_027514.2

Conjugate:
Unconjugated

Full name:
poliovirus receptor

Gene ID:
52118

Applications

Tested Applications:
Cytometric bead array, Sandwich ELISA

Range:
0.625-40 ng/mL (Cytometric Bead Array)
0.313-20 ng/mL (Sandwich ELISA)

Recommended Dilutions:
It is recommended that this reagent should be titrated in each testing system to obtain optimal results.

Product Information

MP00705-2 targets CD155/PVR in immunoassays as a matched antibody pair. Validated in Cytometric bead array, Sandwich ELISA.

Capture antibody: Mouse CD155/PVR Recombinant antibody, PBS Only (Capture) 83724-3-PBS (240731E2). 100 μ g. Concentration 1 mg/ml.

Detection antibody: Mouse CD155/PVR Recombinant antibody, PBS Only (Detector) 83724-1-PBS (240731A2). 100 μ g. Concentration 1 mg/ml.

Alternative CD155/PVR matched antibody pairs: MP00705-1, MP00705-3, MP01053-1, MP01053-2, MP01053-3, MP50402-1, MP50402-2

Unconjugated rabbit recombinant monoclonal antibody pair in PBS only storage buffer at a concentration of 1 mg/mL, ready for conjugation. Created using Proteintech's proprietary in-house recombinant technology. Recombinant production enables unrivalled batch-to-batch consistency, easy scale-up, and future security of supply.

Matched antibody pairs are designed for use in a variety of assays and platforms that require matched antibody pairs.

Antibody use should be optimized for each application and assay.

Storage

Storage:
Store at -80°C.

The product is shipped with ice packs. Upon receipt, store it immediately at -80°C

Storage buffer:
PBS only

For technical support and original validation data for this product please contact:

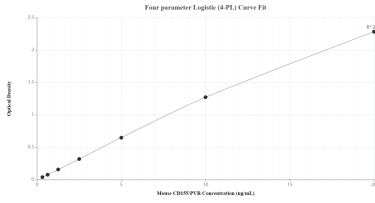
T: 4006900926

E: Proteintech-CN@ptglab.com

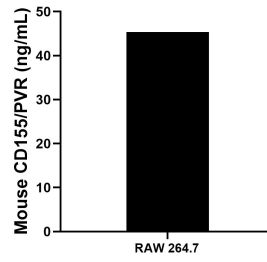
W: ptgcn.com

This product is exclusively available under Proteintech Group brand and is not available to purchase from any other manufacturer.

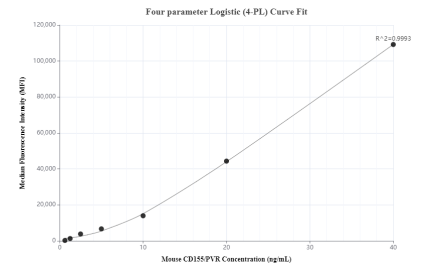
Selected Validation Data



Sandwich ELISA standard curve of MP00705-2, Mouse CD155/PVR Recombinant Matched Antibody Pair - PBS only. 83724-3-PBS was coated to a plate as the capture antibody and incubated with serial dilutions of standard Eg0903. 83724-1-PBS was HRP conjugated as the detection antibody. Range: 0.313-20 ng/mL



The mean CD155/PVR concentration was determined to be 45.36 ng/mL in RAW 264.7 cell extract based on a 4.20 mg/mL extract load.



Cytometric bead array standard curve of MP00705-2, MOUSE CD155/PVR Recombinant Matched Antibody Pair, PBS Only. Capture antibody: 83724-3-PBS. Detection antibody: 83724-1-PBS. Standard: Eg0903. Range: 0.625-40 ng/mL