

GBP1 Recombinant Matched Antibody Pair, PBS Only

Catalog Number:MP00707-4

Capture Antibody Information

Catalog Number: 83751-2-PBS	Clone ID: 240634G7	Conjugate: Unconjugated
Host: Rabbit	Reactivity: human	Full name: GTP binding protein 1
Isotype: IgG	GenBank: BC002666	Gene ID: 2633
Purification Method: Protein A purification	Immunogen Catalog Number: Ag7562	

Detection Antibody Information

Catalog Number: 83751-4-PBS	Clone ID: 240634D12	Conjugate: Unconjugated
Host: Rabbit	Reactivity: human	Full name: GTP binding protein 1
Isotype: IgG	GenBank: BC002666	Gene ID: 2633
Purification Method: Protein A purification	Immunogen Catalog Number: Ag7562	

Applications

Tested Applications: Sandwich ELISA	Range: 54.68-3500 pg/mL (Sandwich ELISA)	Recommended Dilutions: It is recommended that this reagent should be titrated in each testing system to obtain optimal results.
---	--	---

Product Information

MP00707-4 targets GBP1 in immunoassays as a matched antibody pair. Validated in Sandwich ELISA.

Capture antibody: GBP1 Recombinant antibody, PBS Only (Capture) 83751-2-PBS (240634G7). 100 µg. Concentration 1 mg/ml.

Detection antibody: GBP1 Recombinant antibody, PBS Only (Detector) 83751-4-PBS (240634D12). 100 µg. Concentration 1 mg/ml.

Alternative GBP1 matched antibody pairs: MP00707-1, MP00707-2, MP00707-3

Unconjugated rabbit recombinant monoclonal antibody pair in PBS only storage buffer at a concentration of 1 mg/mL, ready for conjugation. Created using Proteintech's proprietary in-house recombinant technology. Recombinant production enables unrivalled batch-to-batch consistency, easy scale-up, and future security of supply.

Matched antibody pairs are designed for use in a variety of assays and platforms that require matched antibody pairs.

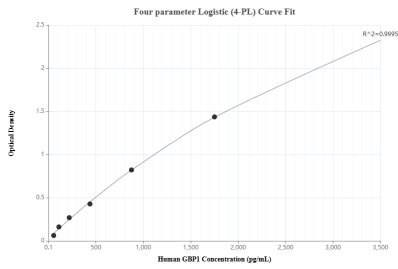
Antibody use should be optimized for each application and assay.

Storage

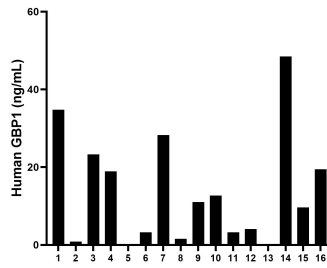
Storage:
Store at -80°C.
The product is shipped with ice packs. Upon receipt, store it immediately at -80°C

Storage buffer:
PBS only

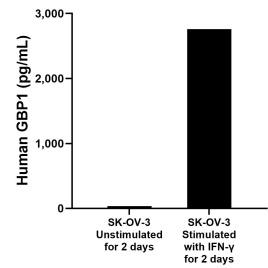
Selected Validation Data



Sandwich ELISA standard curve of MP00707-4, Human GBP1 Recombinant Matched Antibody Pair - PBS only. 83751-2-PBS was coated to a plate as the capture antibody and incubated with serial dilutions of standard Ag7562. 83751-4-PBS was HRP conjugated as the detection antibody. Range: 54.68-3500 pg/mL



Serum of eight individual healthy human donors was measured. The human GBP1 concentration of detected samples was determined to be 14.66 ng/mL with a range of 0.29 - 48.49 ng/mL.



SK-OV-3 cells were cultured in DMEM supplemented with 10% fetal bovine serum, 2.5 mM L-glutamine, 100 U/mL penicillin, and 100 μ g/mL streptomycin sulfate. Cells were stimulated with 1000 U/ml recombinant human IFN- γ for 48h. An aliquot of the cell culture supernatants was removed, assayed for human GBP1.