

For Research Use Only



Mouse E-selectin/CD62E Recombinant Matched Antibody Pair, PBS Only

Catalog Number:MP00720-2

Capture Antibody Information

Catalog Number:
83720-4-PBS

Host:
Rabbit

Isotype:
IgG

Purification Method:
Protein A purification

Clone ID:
240700G8

Reactivity:
mouse

GenBank:
NM_011345.2

Conjugate:
Unconjugated

Full name:
selectin, endothelial cell

Gene ID:
20339

Detection Antibody Information

Catalog Number:
83720-2-PBS

Host:
Rabbit

Isotype:
IgG

Purification Method:
Protein A purification

Clone ID:
240700F2

Reactivity:
mouse

GenBank:
NM_011345.2

Conjugate:
Unconjugated

Full name:
selectin, endothelial cell

Gene ID:
20339

Applications

Tested Applications:
Cytometric bead array

Range:
0.313-40 ng/mL (Cytometric Bead Array)

Recommended Dilutions:
It is recommended that this reagent should be titrated in each testing system to obtain optimal results.

Product Information

MP00720-2 targets E-selectin/CD62E in immunoassays as a matched antibody pair. Validated in Cytometric bead array.

Capture antibody: Mouse E-selectin Recombinant antibody, PBS Only (Capture) 83720-4-PBS (240700G8). 100 µg. Concentration 1 mg/ml.

Detection antibody: Mouse E-selectin Recombinant antibody, PBS Only (Detector) 83720-2-PBS (240700F2). 100 µg. Concentration 1 mg/ml.

Alternative E-selectin/CD62E matched antibody pairs: MP00720-1, MP00720-3

Unconjugated rabbit recombinant monoclonal antibody pair in PBS only storage buffer at a concentration of 1 mg/mL, ready for conjugation. Created using Proteintech's proprietary in-house recombinant technology. Recombinant production enables unrivalled batch-to-batch consistency, easy scale-up, and future security of supply.

Matched antibody pairs are designed for use in a variety of assays and platforms that require matched antibody pairs.

Antibody use should be optimized for each application and assay.

Storage

Storage:
Store at -80°C.

The product is shipped with ice packs. Upon receipt, store it immediately at -80°C

Storage buffer:
PBS only

For technical support and original validation data for this product please contact:

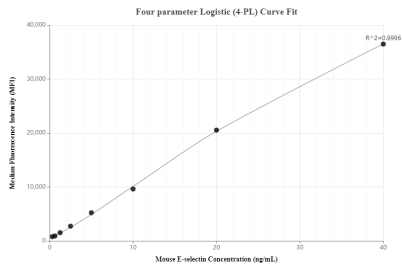
T: 4006900926

E: Proteintech-CN@ptglab.com

W: ptgcn.com

This product is exclusively available under Proteintech Group brand and is not available to purchase from any other manufacturer.

Selected Validation Data



Cytometric bead array standard curve of MP00720-2, MOUSE E-selectin/CD62E Recombinant Matched Antibody Pair, PBS Only. Capture antibody: 83720-4-PBS. Detection antibody: 83720-2-PBS. Standard: Eg0610. Range: 0.313-40 ng/mL