

For Research Use Only

BCL9 Recombinant Matched Antibody Pair, PBS Only



Catalog Number:MP00739-4

Capture Antibody Information

Catalog Number:
83760-6-PBS

Host:
Rabbit

Isotype:
IgG

Purification Method:
Protein A purification

Clone ID:
240682E12

Reactivity:
human

GenBank:
BC116451

Immunogen Catalog Number:
Ag19158

Conjugate:
Unconjugated

Full name:
B-cell CLL/lymphoma 9

Gene ID:
607

Detection Antibody Information

Catalog Number:
83760-5-PBS

Host:
Rabbit

Isotype:
IgG

Purification Method:
Protein A purification

Clone ID:
240682C12

Reactivity:
human

GenBank:
BC116451

Immunogen Catalog Number:
Ag19158

Conjugate:
Unconjugated

Full name:
B-cell CLL/lymphoma 9

Gene ID:
607

Applications

Tested Applications:
Sandwich ELISA

Range:
78.1-5000 pg/mL (Sandwich ELISA)

Recommended Dilutions:
It is recommended that this reagent should be titrated in each testing system to obtain optimal results.

Product Information

MP00739-4 targets BCL9 in immunoassays as a matched antibody pair. Validated in Sandwich ELISA.

Capture antibody: BCL9 Recombinant antibody, PBS Only (Capture) 83760-6-PBS (240682E12). 100 μ g. Concentration 1 mg/ml.

Detection antibody: BCL9 Recombinant antibody, PBS Only (Detector) 83760-5-PBS (240682C12). 100 μ g. Concentration 1 mg/ml.

Alternative BCL9 matched antibody pairs: MP00739-1, MP00739-2, MP00739-3

Unconjugated rabbit recombinant monoclonal antibody pair in PBS only storage buffer at a concentration of 1 mg/mL, ready for conjugation. Created using Proteintech's proprietary in-house recombinant technology. Recombinant production enables unrivalled batch-to-batch consistency, easy scale-up, and future security of supply.

Matched antibody pairs are designed for use in a variety of assays and platforms that require matched antibody pairs.

Antibody use should be optimized for each application and assay.

Storage

Storage:

Store at -80°C.

The product is shipped with ice packs. Upon receipt, store it immediately at -80°C

Storage buffer:

PBS only

For technical support and original validation data for this product please contact:

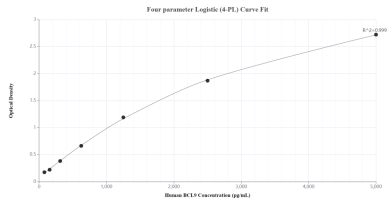
T: 4006900926

E: Proteintech-CN@ptglab.com

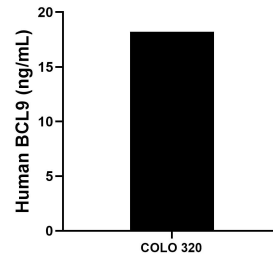
W: ptgcn.com

This product is exclusively available under Proteintech Group brand and is not available to purchase from any other manufacturer.

Selected Validation Data



Sandwich ELISA standard curve of MP00739-4, Human BCL9 Recombinant Matched Antibody Pair - PBS only. 83760-6-PBS was coated to a plate as the capture antibody and incubated with serial dilutions of standard Ag19158. 83760-5-PBS was HRP conjugated as the detection antibody. Range: 78.1-5000 pg/mL.



The mean BCL9 concentration was determined to be 18.2 ng/mL in COLO 320 cell extract based on a 2.0 mg/mL extract load.