

For Research Use Only

APOL1 Recombinant Matched Antibody Pair, PBS Only



Catalog Number:MP00760-2

Capture Antibody Information

Catalog Number:
83770-2-PBS
Host:
Rabbit
Isotype:
IgG
Purification Method:
Protein A purification

Clone ID:
240814D9
Reactivity:
human
GenBank:
BC017331
Immunogen Catalog Number:
ag2016

Conjugate:
Unconjugated
Full name:
apolipoprotein L, 1
Gene ID:
8542

Detection Antibody Information

Catalog Number:
83770-1-PBS
Host:
Rabbit
Isotype:
IgG
Purification Method:
Protein A purification

Clone ID:
240814A3
Reactivity:
human
GenBank:
BC017331
Immunogen Catalog Number:
ag2016

Conjugate:
Unconjugated
Full name:
apolipoprotein L, 1
Gene ID:
8542

Applications

Tested Applications:
Cytometric bead array, Sandwich ELISA

Range:
0.78-100 ng/mL (Cytometric Bead Array)
0.25-16 ng/mL (Sandwich ELISA)

Recommended Dilutions:
It is recommended that this reagent should be titrated in each testing system to obtain optimal results.

Product Information

MP00760-2 targets APOL1 in immunoassays as a matched antibody pair. Validated in Cytometric bead array, Sandwich ELISA.

Capture antibody: APOL1 Recombinant antibody, PBS Only (Capture) 83770-2-PBS (240814D9). 100 µg. Concentration 1 mg/ml.

Detection antibody: APOL1 Recombinant antibody, PBS Only (Capture/Detector) 83770-1-PBS (240814A3). 100 µg. Concentration 1 mg/ml.

Alternative APOL1 matched antibody pairs: MP00760-1, MP00760-3

Unconjugated rabbit recombinant monoclonal antibody pair in PBS only storage buffer at a concentration of 1 mg/mL, ready for conjugation. Created using Proteintech's proprietary in-house recombinant technology. Recombinant production enables unrivalled batch-to-batch consistency, easy scale-up, and future security of supply.

Matched antibody pairs are designed for use in a variety of assays and platforms that require matched antibody pairs.

Antibody use should be optimized for each application and assay.

Storage

Storage:
Store at -80°C.
The product is shipped with ice packs. Upon receipt, store it immediately at -80°C
Storage buffer:
PBS only

For technical support and original validation data for this product please contact:

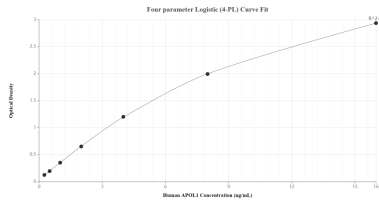
T: 4006900926

E: Proteintech-CN@ptglab.com

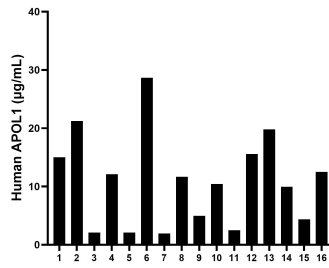
W: ptgcn.com

This product is exclusively available under Proteintech Group brand and is not available to purchase from any other manufacturer.

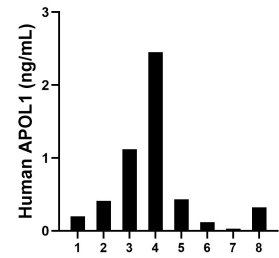
Selected Validation Data



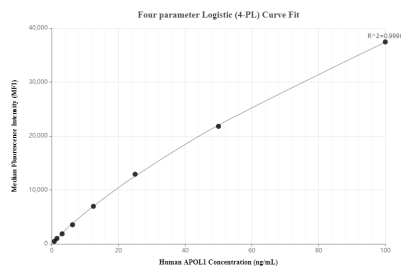
Sandwich ELISA standard curve of MP00760-2, Human APOL1 Recombinant Matched Antibody Pair - PBS only. 83770-2-PBS was coated to a plate as the capture antibody and incubated with serial dilutions of standard Ag2016. 83770-1-PBS was HRP conjugated as the detection antibody. Range: 0.25-16 ng/mL



Serum of sixteen individual healthy human donors was measured. The APOL1 concentration of detected samples was determined to be 10.92 µg/mL with a range of 1.95 - 28.64 µg/mL



Urine of eight individual healthy human donors was measured. The APOL1 concentration of detected samples was determined to be 0.64 ng/mL with a range of 0.03 - 2.45 ng/mL



Cytometric bead array standard curve of MP00760-2, APOL1 Recombinant Matched Antibody Pair, PBS Only. Capture antibody: 83770-2-PBS. Detection antibody: 83770-1-PBS. Standard: Ag2016. Range: 0.78-100 ng/mL