

For Research Use Only

SMUG1 Recombinant Matched Antibody Pair, PBS Only



Catalog Number:MP00765-2

Capture Antibody Information

Catalog Number:
83771-3-PBS

Host:
Rabbit

Isotype:
IgG

Purification Method:
Protein A purification

Clone ID:
240817D1

Reactivity:
human

GenBank:
BC000417

Immunogen Catalog Number:
Ag13934

Conjugate:
Unconjugated

Full name:
single-strand-selective
monofunctional uracil-DNA
glycosylase 1

Gene ID:
23583

Detection Antibody Information

Catalog Number:
83771-2-PBS

Host:
Rabbit

Isotype:
IgG

Purification Method:
Protein A purification

Clone ID:
240817F12

Reactivity:
human

GenBank:
BC000417

Immunogen Catalog Number:
Ag13934

Conjugate:
Unconjugated

Full name:
single-strand-selective
monofunctional uracil-DNA
glycosylase 1

Gene ID:
23583

Applications

Tested Applications:
Cytometric bead array, Sandwich
ELISA

Range:
0.625-80 ng/mL (Cytometric Bead
Array)
0.156-10 ng/mL (Sandwich ELISA)

Recommended Dilutions:
It is recommended that this reagent
should be titrated in each testing
system to obtain optimal results.

Product Information

MP00765-2 targets SMUG1 in immunoassays as a matched antibody pair. Validated in Cytometric bead array, Sandwich ELISA.

Capture antibody: SMUG1 Recombinant antibody, PBS Only (Capture) 83771-3-PBS (240817D1). 100 µg. Concentration 1 mg/ml.

Detection antibody: SMUG1 Recombinant antibody, PBS Only (Detector) 83771-2-PBS (240817F12). 100 µg. Concentration 1 mg/ml.

Alternative SMUG1 matched antibody pairs: MP00765-1, MP00765-3

Unconjugated rabbit recombinant monoclonal antibody pair in PBS only storage buffer at a concentration of 1 mg/mL, ready for conjugation. Created using Proteintech's proprietary in-house recombinant technology. Recombinant production enables unrivalled batch-to-batch consistency, easy scale-up, and future security of supply.

Matched antibody pairs are designed for use in a variety of assays and platforms that require matched antibody pairs.

Antibody use should be optimized for each application and assay.

Storage

Storage:
Store at -80°C.

The product is shipped with ice packs. Upon receipt, store it immediately at -80°C

Storage buffer:
PBS only

For technical support and original validation data for this product please contact:

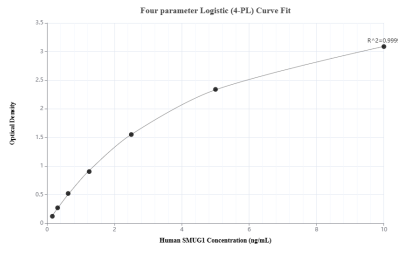
T: 4006900926

E: Proteintech-CN@ptglab.com

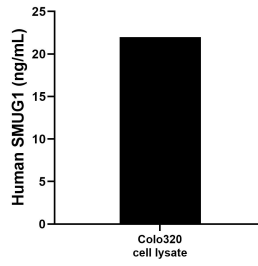
W: ptgcn.com

This product is exclusively available under Proteintech Group brand and is not available to purchase from any other manufacturer.

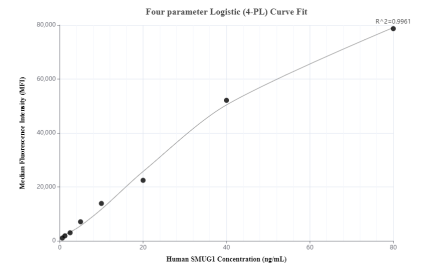
Selected Validation Data



Sandwich ELISA standard curve of MP00765-2, Human SMUG1 Recombinant Matched Antibody Pair - PBS only. 83771-3-PBS was coated to a plate as the capture antibody and incubated with serial dilutions of standard Ag13934. 83771-2-PBS was HRP conjugated as the detection antibody. Range: 0.156-10 ng/mL



Colo320 cell lysate was measured. The human SMUG1 concentration of detected samples was determined to be 21.98 ng/mL (based on a 2.0 mg/mL extract load).



Cytometric bead array standard curve of MP00765-2, SMUG1 Recombinant Matched Antibody Pair, PBS Only. Capture antibody: 83771-3-PBS. Detection antibody: 83771-2-PBS. Standard: Ag13934. Range: 0.625-80 ng/mL