

SETDB1 Recombinant Matched Antibody Pair, PBS Only

Catalog Number:MP00766-4

Capture Antibody Information

Catalog Number: 83772-2-PBS	Clone ID: 240805F5	Conjugate: Unconjugated
Host: Rabbit	Reactivity: human	Full name: SET domain, bifurcated 1
Isotype: IgG	GenBank: BC009362	Gene ID: 9869
Purification Method: Protein A purification	Immunogen Catalog Number: Ag1725	

Detection Antibody Information

Catalog Number: 83772-7-PBS	Clone ID: 240805G1	Conjugate: Unconjugated
Host: Rabbit	Reactivity: human	Full name: SET domain, bifurcated 1
Isotype: IgG	GenBank: BC009362	Gene ID: 9869
Purification Method: Protein A purification	Immunogen Catalog Number: Ag1725	

Applications

Tested Applications: Sandwich ELISA	Range: 0.156-10 ng/mL (Sandwich ELISA)	Recommended Dilutions: It is recommended that this reagent should be titrated in each testing system to obtain optimal results.
---	--	---

Product Information

MP00766-4 targets SETDB1 in immunoassays as a matched antibody pair. Validated in Sandwich ELISA.

Capture antibody: SETDB1 Recombinant antibody, PBS Only (Capture) 83772-2-PBS (240805F5). 100 µg. Concentration 1 mg/ml.

Detection antibody: SETDB1 Recombinant antibody, PBS Only (Detector) 83772-7-PBS (240805G1). 100 µg. Concentration 1 mg/ml.

Alternative SETDB1 matched antibody pairs: MP00766-1, MP00766-2, MP00766-3

Unconjugated rabbit recombinant monoclonal antibody pair in PBS only storage buffer at a concentration of 1 mg/mL, ready for conjugation. Created using Proteintech's proprietary in-house recombinant technology. Recombinant production enables unrivalled batch-to-batch consistency, easy scale-up, and future security of supply.

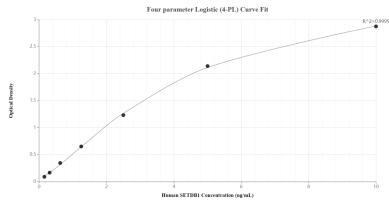
Matched antibody pairs are designed for use in a variety of assays and platforms that require matched antibody pairs.

Antibody use should be optimized for each application and assay.

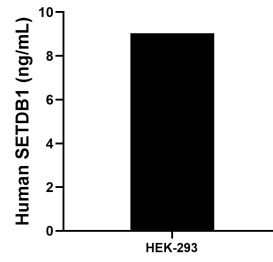
Storage

Storage:
Store at -80°C.
The product is shipped with ice packs. Upon receipt, store it immediately at -80°C
Storage buffer:
PBS only

Selected Validation Data



Sandwich ELISA standard curve of MP00766-4, Human SETDB1 Recombinant Matched Antibody Pair - PBS only. 83772-2-PBS was coated to a plate as the capture antibody and incubated with serial dilutions of standard Ag1725. 83772-7-PBS was HRP conjugated as the detection antibody. Range: 0.156-10 ng/mL



The mean SETDB1 concentration was determined to be 9.04 ng/mL in HEK-293 cell extract based on a 4.50 mg/mL extract load.