

For Research Use Only

# Mouse Mmp9 Recombinant Matched Antibody Pair, PBS Only



Catalog Number:MP00776-1

## Capture Antibody Information

**Catalog Number:**  
82854-7-PBS  
**Host:**  
Rabbit  
**Isotype:**  
IgG  
**Purification Method:**  
Protein A purification

**Clone ID:**  
230069E11  
**Reactivity:**  
mouse  
**GenBank:**  
NM\_013599

**Conjugate:**  
Unconjugated  
**Full name:**  
matrix metalloproteinase 9  
**Gene ID:**  
17395

## Detection Antibody Information

**Catalog Number:**  
82854-6-PBS  
**Host:**  
Rabbit  
**Isotype:**  
IgG  
**Purification Method:**  
Protein A purification

**Clone ID:**  
230069C7  
**Reactivity:**  
mouse  
**GenBank:**  
NM\_013599

**Conjugate:**  
Unconjugated  
**Full name:**  
matrix metalloproteinase 9  
**Gene ID:**  
17395

## Applications

**Tested Applications:**  
Sandwich ELISA

**Range:**  
0.16-10 ng/mL (Sandwich ELISA)

**Recommended Dilutions:**  
It is recommended that this reagent should be titrated in each testing system to obtain optimal results.

## Product Information

MP00776-1 targets Mmp9 in immunoassays as a matched antibody pair. Validated in Sandwich ELISA.

Capture antibody: Mouse Mmp9 Recombinant antibody, PBS Only (Capture) 82854-7-PBS (230069E11). 100 µg. Concentration 1 mg/mL.

Detection antibody: Mouse Mmp9 Recombinant antibody, PBS Only (Detector) 82854-6-PBS (230069C7). 100 µg. Concentration 1 mg/mL.

Alternative Mmp9 matched antibody pairs: MP00757-1, MP50079-1

Unconjugated rabbit recombinant monoclonal antibody pair in PBS only storage buffer at a concentration of 1 mg/mL, ready for conjugation. Created using Proteintech's proprietary in-house recombinant technology. Recombinant production enables unrivalled batch-to-batch consistency, easy scale-up, and future security of supply.

Matched antibody pairs are designed for use in a variety of assays and platforms that require matched antibody pairs.

Antibody use should be optimized for each application and assay.

## Storage

**Storage:**  
Store at -80°C.  
**The product is shipped with ice packs. Upon receipt, store it immediately at -80°C**  
**Storage buffer:**  
PBS only

For technical support and original validation data for this product please contact:

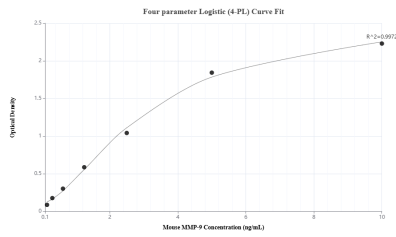
T: 4006900926

E: Proteintech-CN@ptglab.com

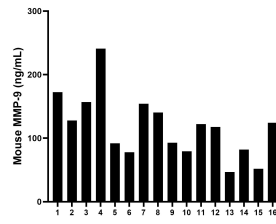
W: ptgcn.com

**This product is exclusively available under Proteintech Group brand and is not available to purchase from any other manufacturer.**

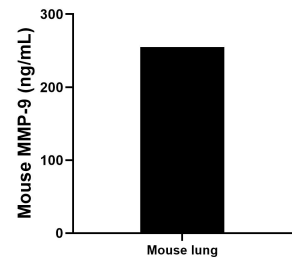
## Selected Validation Data



Sandwich ELISA standard curve of MP00776-1, Mouse MMP-9 Recombinant Matched Antibody Pair - PBS only. 82854-7-PBS was coated to a plate as the capture antibody and incubated with serial dilutions of standard Eg0452. 82854-6-PBS was HRP conjugated as the detection antibody. Range: 0.16-10 ng/mL.



Serum of eight mice was measured. The Mouse MMP-9 concentration of detected samples was determined to be 117.52 ng/mL with a range of 46.86 - 240.93 ng/mL.



Mouse lung tissue (3 lungs in 1-2 mm pieces in 100 mL of medium) was cultured for 6 days in RPMI supplemented with 10% fetal bovine serum, 50  $\mu$  M  $\beta$ -mercaptoethanol, 2 mM L-glutamine, 100 U/mL penicillin, and 100  $\mu$  g/mL streptomycin sulfate. An aliquot of the cell culture supernatant was removed, assayed for mouse Total MMP-9, and measured 255.0 ng/mL.