

PTPN12 Recombinant Matched Antibody Pair, PBS Only

Catalog Number: MP00788-4

Capture Antibody Information

Catalog Number:
83851-1-PBS
Host:
Rabbit
Isotype:
IgG
Purification Method:
Protein A purification

Clone ID:
240983A2
Reactivity:
human
GenBank:
NM_002835.3
Immunogen Catalog Number:
Ag35382

Conjugate:
Unconjugated
Full name:
protein tyrosine phosphatase, non-receptor type 12
Gene ID:
5782

Detection Antibody Information

Catalog Number:
83851-5-PBS
Host:
Rabbit
Isotype:
IgG
Purification Method:
Protein A purification

Clone ID:
240983E1
Reactivity:
human
GenBank:
NM_002835.3
Immunogen Catalog Number:
Ag35382

Conjugate:
Unconjugated
Full name:
protein tyrosine phosphatase, non-receptor type 12
Gene ID:
5782

Applications

Tested Applications:
Sandwich ELISA

Range:
93.75-6000 pg/mL (Sandwich ELISA)

Recommended Dilutions:
It is recommended that this reagent should be titrated in each testing system to obtain optimal results.

Product Information

MP00788-4 targets PTPN12 in immunoassays as a matched antibody pair. Validated in Sandwich ELISA.

Capture antibody: PTPN12 Recombinant antibody, PBS Only (Capture) 83851-1-PBS (240983A2). 100 µg. Concentration 1 mg/mL.

Detection antibody: PTPN12 Recombinant antibody, PBS Only (Detector) 83851-5-PBS (240983E1). 100 µg. Concentration 1 mg/mL.

Unconjugated rabbit recombinant monoclonal antibody pair in PBS only storage buffer at a concentration of 1 mg/mL, ready for conjugation. Created using Proteintech's proprietary in-house recombinant technology. Recombinant production enables unrivalled batch-to-batch consistency, easy scale-up, and future security of supply.

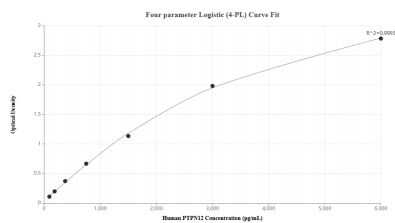
Matched antibody pairs are designed for use in a variety of assays and platforms that require matched antibody pairs.

Antibody use should be optimized for each application and assay.

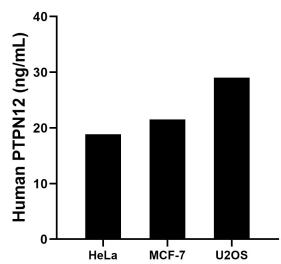
Storage

Storage:
Store at -80°C.
The product is shipped with ice packs. Upon receipt, store it immediately at -80°C
Storage buffer:
PBS only

Selected Validation Data



Sandwich ELISA standard curve of MP00788-4, Human PTPN12 Recombinant Matched Antibody Pair - PBS only. 83851-1-PBS was coated to a plate as the capture antibody and incubated with serial dilutions of standard Ag35382. 83851-5-PBS was HRP conjugated as the detection antibody. Range: 93.75-6000 pg/mL



The mean PTPN12 concentration was determined to be 18.88 ng/mL in HeLa cell extract based on a 1.2 mg/mL extract load, 21.55 ng/mL in MCF-7 cell extract based on a 1.2 mg/mL extract load and 29.01 ng/mL in U2OS cell extract based on a 1.3 mg/mL extract load.