

For Research Use Only

MYOM3 Recombinant Matched Antibody Pair, PBS Only



Catalog Number:MP00789-2

Capture Antibody Information

Catalog Number:
83852-4-PBS

Host:
Rabbit

Isotype:
IgG

Purification Method:
Protein A purification

Clone ID:
240981A3

Reactivity:
human

GenBank:
BC067101

Immunogen Catalog Number:
Ag11849

Conjugate:
Unconjugated

Full name:
myomesin family, member 3

Gene ID:
127294

Detection Antibody Information

Catalog Number:
83852-5-PBS

Host:
Rabbit

Isotype:
IgG

Purification Method:
Protein A purification

Clone ID:
240981G12

Reactivity:
human

GenBank:
BC067101

Immunogen Catalog Number:
Ag11849

Conjugate:
Unconjugated

Full name:
myomesin family, member 3

Gene ID:
127294

Applications

Tested Applications:
Sandwich ELISA

Range:
0.156-10 ng/mL (Sandwich ELISA)

Recommended Dilutions:
It is recommended that this reagent should be titrated in each testing system to obtain optimal results.

Product Information

MP00789-2 targets MYOM3 in immunoassays as a matched antibody pair. Validated in Sandwich ELISA.

Capture antibody: MYOM3 Recombinant antibody, PBS Only (Capture) 83852-4-PBS (240981A3). 100 µg. Concentration 1 mg/mL.

Detection antibody: MYOM3 Recombinant antibody, PBS Only (Detector) 83852-5-PBS (240981G12). 100 µg. Concentration 1 mg/mL.

Alternative MYOM3 matched antibody pairs: MP00789-1

Unconjugated rabbit recombinant monoclonal antibody pair in PBS only storage buffer at a concentration of 1 mg/mL, ready for conjugation. Created using Proteintech's proprietary in-house recombinant technology. Recombinant production enables unrivalled batch-to-batch consistency, easy scale-up, and future security of supply.

Matched antibody pairs are designed for use in a variety of assays and platforms that require matched antibody pairs.

Antibody use should be optimized for each application and assay.

Storage

Storage:

Store at -80°C.

The product is shipped with ice packs. Upon receipt, store it immediately at -80°C

Storage buffer:

PBS only

For technical support and original validation data for this product please contact:

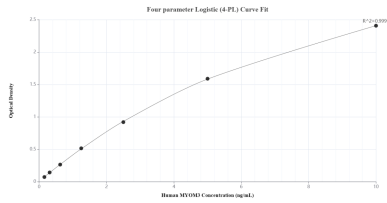
T: 4006900926

E: Proteintech-CN@ptglab.com

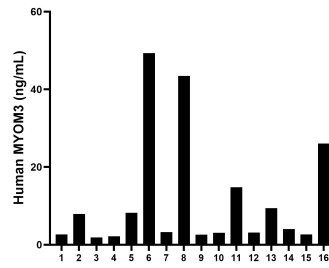
W: ptgcn.com

This product is exclusively available under Proteintech Group brand and is not available to purchase from any other manufacturer.

Selected Validation Data



Sandwich ELISA standard curve of MP00789-2, Human MYOM3 Recombinant Matched Antibody Pair - PBS only. 83852-4-PBS was coated to a plate as the capture antibody and incubated with serial dilutions of standard Ag11849. 83852-5-PBS was HRP conjugated as the detection antibody. Range: 0.156-10 ng/mL.



Serum of sixteen individual healthy human donors was measured. The MYOM3 concentration of detected samples was determined to be 11.54 ng/mL with a range of 1.88 - 49.30 ng/mL.