

SMAD2 Recombinant Matched Antibody Pair, PBS Only

Catalog Number:MP00791-1

Capture Antibody Information

Catalog Number: 83841-2-PBS	Clone ID: 240950G3	Conjugate: Unconjugated
Host: Rabbit	Reactivity: human	Full name: SMAD family member 2
Isotype: IgG	GenBank: BC014840	Gene ID: 4087
Purification Method: Protein A purification	Immunogen Catalog Number: Ag3237	

Detection Antibody Information

Catalog Number: 83841-3-PBS	Clone ID: 240950G10	Conjugate: Unconjugated
Host: Rabbit	Reactivity: human	Full name: SMAD family member 2
Isotype: IgG	GenBank: BC014840	Gene ID: 4087
Purification Method: Protein A purification	Immunogen Catalog Number: Ag3237	

Applications

Tested Applications: Cytometric bead array, Sandwich ELISA	Range: 0.469-60 ng/mL (Cytometric Bead Array) 0.313-20 ng/mL (Sandwich ELISA)	Recommended Dilutions: It is recommended that this reagent should be titrated in each testing system to obtain optimal results.
--	--	---

Product Information

MP00791-1 targets SMAD2 in immunoassays as a matched antibody pair. Validated in Cytometric bead array, Sandwich ELISA.

Capture antibody: SMAD2 Recombinant antibody, PBS Only (Capture) 83841-2-PBS (240950G3). 100 µg. Concentration 1 mg/ml.

Detection antibody: SMAD2 Recombinant antibody, PBS Only (Capture/Detector) 83841-3-PBS (240950G10). 100 µg. Concentration 1 mg/ml.

Alternative SMAD2 matched antibody pairs: MP00791-2, MP00791-3

Unconjugated rabbit recombinant monoclonal antibody pair in PBS only storage buffer at a concentration of 1 mg/mL, ready for conjugation. Created using Proteintech's proprietary in-house recombinant technology. Recombinant production enables unrivalled batch-to-batch consistency, easy scale-up, and future security of supply.

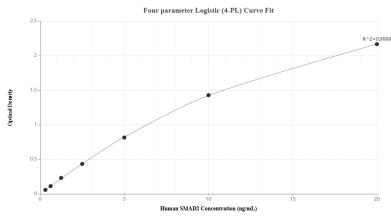
Matched antibody pairs are designed for use in a variety of assays and platforms that require matched antibody pairs.

Antibody use should be optimized for each application and assay.

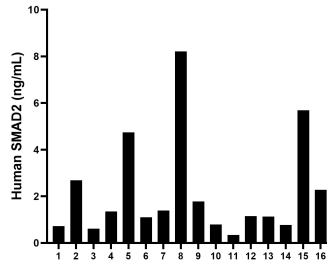
Storage

Storage:
Store at -80°C.
The product is shipped with ice packs. Upon receipt, store it immediately at -80°C
Storage buffer:
PBS only

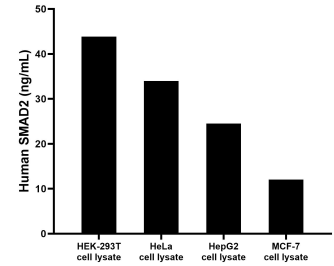
Selected Validation Data



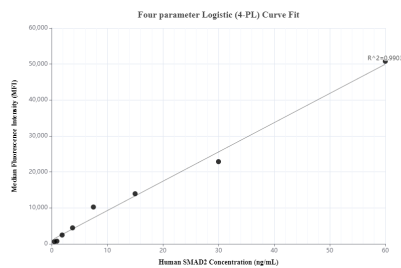
Sandwich ELISA standard curve of MP00791-1, Human SMAD2 Recombinant Matched Antibody Pair - PBS only. 83841-2-PBS was coated to a plate as the capture antibody and incubated with serial dilutions of standard Ag3237. 83841-3-PBS was HRP conjugated as the detection antibody. Range: 0.313-20 ng/mL



Serum of sixteen individual healthy human donors was measured. The human SMAD2 concentration of detected samples was determined to be 2.17 ng/mL with a range of 0.34 - 8.22 ng/mL



HEK-293T, HeLa, HepG2 and MCF-7 cell lysates were measured. The human SMAD2 concentration of detected samples was determined to be 43.85 ng/mL in HEK-293T cell lysate (based on a 5.5 mg/mL extract load). The human SMAD2 concentration of detected samples was determined to be 33.98 ng/mL in HeLa cell lysate (based on a 7 mg/mL extract load). The human SMAD2 concentration of detected samples was determined to be 24.50 ng/mL in HepG2 cell



Cytometric bead array standard curve of MP00791-1, SMAD2 Recombinant Matched Antibody Pair, PBS Only. Capture antibody: 83841-2-PBS. Detection antibody: 83841-3-PBS. Standard: Ag3237. Range: 0.469-60 ng/mL