

For Research Use Only

# ALDH1A1 Recombinant Matched Antibody Pair, PBS Only



Catalog Number:MP00795-2

## Capture Antibody Information

**Catalog Number:**  
83830-3-PBS  
**Host:**  
Rabbit  
**Isotype:**  
IgG  
**Purification Method:**  
Protein A purification

**Clone ID:**  
240995C8  
**Reactivity:**  
human  
**GenBank:**  
BC001505  
**Immunogen Catalog Number:**  
Ag8665

**Conjugate:**  
Unconjugated  
**Full name:**  
aldehyde dehydrogenase 1 family, member A1  
**Gene ID:**  
216

## Detection Antibody Information

**Catalog Number:**  
83830-2-PBS  
**Host:**  
Rabbit  
**Isotype:**  
IgG  
**Purification Method:**  
Protein A purification

**Clone ID:**  
240995F4  
**Reactivity:**  
human, mouse  
**GenBank:**  
BC001505  
**Immunogen Catalog Number:**  
Ag8665

**Conjugate:**  
Unconjugated  
**Full name:**  
aldehyde dehydrogenase 1 family, member A1  
**Gene ID:**  
216

## Applications

**Tested Applications:**  
Sandwich ELISA

**Range:**  
0.625-20 ng/mL (Sandwich ELISA)

**Recommended Dilutions:**  
It is recommended that this reagent should be titrated in each testing system to obtain optimal results.

## Product Information

MP00795-2 targets ALDH1A1 in immunoassays as a matched antibody pair. Validated in Sandwich ELISA.

Capture antibody: ALDH1A1 Recombinant antibody, PBS Only (Capture) 83830-3-PBS (240995C8). 100 µg. Concentration 1 mg/ml.

Detection antibody: ALDH1A1 Recombinant antibody, PBS Only (Detector) 83830-2-PBS (240995F4). 100 µg. Concentration 1 mg/ml.

Alternative ALDH1A1 matched antibody pairs: MP00795-1

Unconjugated rabbit recombinant monoclonal antibody pair in PBS only storage buffer at a concentration of 1 mg/mL, ready for conjugation. Created using Proteintech's proprietary in-house recombinant technology. Recombinant production enables unrivalled batch-to-batch consistency, easy scale-up, and future security of supply.

Matched antibody pairs are designed for use in a variety of assays and platforms that require matched antibody pairs.

Antibody use should be optimized for each application and assay.

## Storage

**Storage:**  
Store at -80°C.  
**The product is shipped with ice packs. Upon receipt, store it immediately at -80°C**  
**Storage buffer:**  
PBS only

For technical support and original validation data for this product please contact:

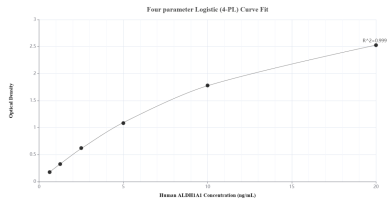
T: 4006900926

E: Proteintech-CN@ptglab.com

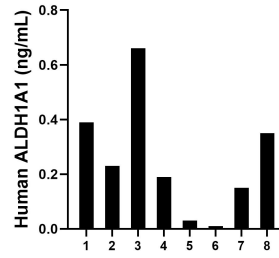
W: ptgcn.com

**This product is exclusively available under Proteintech Group brand and is not available to purchase from any other manufacturer.**

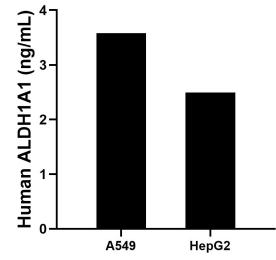
## Selected Validation Data



Sandwich ELISA standard curve of MP00795-2, Human ALDH1A1 Recombinant Matched Antibody Pair - PBS only. 83830-3-PBS was coated to a plate as the capture antibody and incubated with serial dilutions of standard Ag8665. 83830-2-PBS was HRP conjugated as the detection antibody. Range: 0.625-20 ng/mL



Serum of eight individual healthy human donors was measured. The ALDH1A1 concentration of detected samples was determined to be 0.25 ng/mL with a range of 0.01-0.66 ng/mL.



The mean ALDH1A1 concentration was determined to be 3.58 ng/mL in A549 cell extract based on a 1.00 mg/mL extract load and 2.49 ng/mL in HepG2 cell extract based on a 1.20 mg/mL extract load.