

DLL3 Recombinant Matched Antibody Pair, PBS Only

Catalog Number:MP00798-2

Capture Antibody Information

Catalog Number: 83834-3-PBS	Clone ID: 240956A11	Conjugate: Unconjugated
Host: Rabbit	Reactivity: human	Full name: delta-like 3 (Drosophila)
Isotype: IgG	GenBank: BC000218	Gene ID: 10683
Purification Method: Protein A purification	Immunogen Catalog Number: Ag0579	

Detection Antibody Information

Catalog Number: 83834-4-PBS	Clone ID: 240956G10	Conjugate: Unconjugated
Host: Rabbit	Reactivity: human	Full name: delta-like 3 (Drosophila)
Isotype: IgG	GenBank: BC000218	Gene ID: 10683
Purification Method: Protein A purification	Immunogen Catalog Number: Ag0579	

Applications

Tested Applications: Sandwich ELISA	Range: 78.1-5000 pg/mL (Sandwich ELISA)	Recommended Dilutions: It is recommended that this reagent should be titrated in each testing system to obtain optimal results.
---	---	---

Product Information

MP00798-2 targets DLL3 in immunoassays as a matched antibody pair. Validated in Sandwich ELISA.

Capture antibody: DLL3 Recombinant antibody, PBS Only (Capture) 83834-3-PBS (240956A11). 100 µg. Concentration 1 mg/ml.

Detection antibody: DLL3 Recombinant antibody, PBS Only (Detector) 83834-4-PBS (240956G10). 100 µg. Concentration 1 mg/ml.

Alternative DLL3 matched antibody pairs: MP00798-1

Unconjugated rabbit recombinant monoclonal antibody pair in PBS only storage buffer at a concentration of 1 mg/mL, ready for conjugation. Created using Proteintech's proprietary in-house recombinant technology. Recombinant production enables unrivalled batch-to-batch consistency, easy scale-up, and future security of supply.

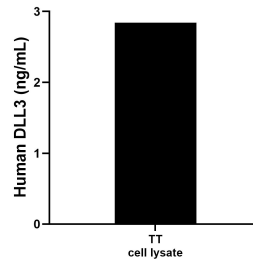
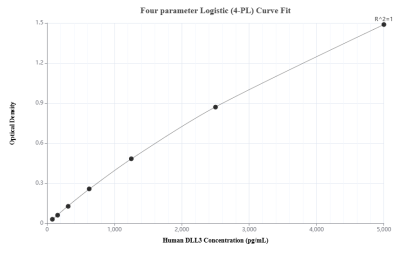
Matched antibody pairs are designed for use in a variety of assays and platforms that require matched antibody pairs.

Antibody use should be optimized for each application and assay.

Storage

Storage:
Store at -80°C.
The product is shipped with ice packs. Upon receipt, store it immediately at -80°C
Storage buffer:
PBS only

Selected Validation Data



Sandwich ELISA standard curve of MP00798-2, Human DLL3 Recombinant Matched Antibody Pair - PBS only. 83834-3-PBS was coated to a plate as the capture antibody and incubated with serial dilutions of standard Ag0579. 83834-4-PBS was HRP conjugated as the detection antibody. Range: 78.1-5000 pg/mL.

TT cell lysate was measured. The human DLL3 concentration of detected samples was determined to be 2.84 ng/mL (based on a 2.9 mg/mL extract load).