

For Research Use Only

# SLC31A1 Recombinant Matched Antibody Pair, PBS Only



Catalog Number:MP00817-4

## Capture Antibody Information

**Catalog Number:**  
83844-7-PBS  
**Host:**  
Rabbit  
**Isotype:**  
IgG  
**Purification Method:**  
Protein A purification

**Clone ID:**  
240868E3  
**Reactivity:**  
human  
**GenBank:**  
BC013611  
**Immunogen Catalog Number:**  
Ag26601

**Conjugate:**  
Unconjugated  
**Full name:**  
solute carrier family 31 (copper transporters), member 1  
**Gene ID:**  
1317

## Detection Antibody Information

**Catalog Number:**  
83844-1-PBS  
**Host:**  
Rabbit  
**Isotype:**  
IgG  
**Purification Method:**  
Protein A purification

**Clone ID:**  
240868A11  
**Reactivity:**  
human  
**GenBank:**  
BC013611  
**Immunogen Catalog Number:**  
Ag26601

**Conjugate:**  
Unconjugated  
**Full name:**  
solute carrier family 31 (copper transporters), member 1  
**Gene ID:**  
1317

## Applications

**Tested Applications:**  
Sandwich ELISA

**Range:**  
0.156-10 ng/mL (Sandwich ELISA)

**Recommended Dilutions:**  
It is recommended that this reagent should be titrated in each testing system to obtain optimal results.

## Product Information

MP00817-4 targets SLC31A1 in immunoassays as a matched antibody pair. Validated in Sandwich ELISA.

Capture antibody: SLC31A1 Recombinant antibody, PBS Only (Capture) 83844-7-PBS (240868E3). 100 µg. Concentration 1 mg/ml.

Detection antibody: SLC31A1 Recombinant antibody, PBS Only (Detector) 83844-1-PBS (240868A11). 100 µg. Concentration 1 mg/ml.

Unconjugated rabbit recombinant monoclonal antibody pair in PBS only storage buffer at a concentration of 1 mg/mL, ready for conjugation. Created using Proteintech's proprietary in-house recombinant technology. Recombinant production enables unrivalled batch-to-batch consistency, easy scale-up, and future security of supply.

Matched antibody pairs are designed for use in a variety of assays and platforms that require matched antibody pairs.

Antibody use should be optimized for each application and assay.

## Storage

**Storage:**  
Store at -80°C.  
**The product is shipped with ice packs. Upon receipt, store it immediately at -80°C**  
**Storage buffer:**  
PBS only

For technical support and original validation data for this product please contact:

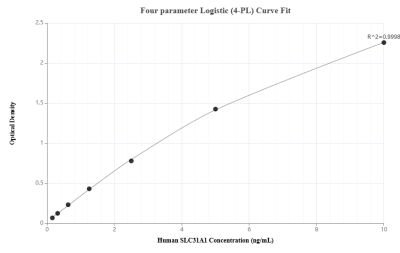
T: 4006900926

E: Proteintech-CN@ptglab.com

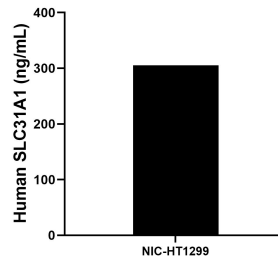
W: ptgcn.com

**This product is exclusively available under Proteintech Group brand and is not available to purchase from any other manufacturer.**

## Selected Validation Data



Sandwich ELISA standard curve of MP00817-4, Human SLC31A1 Recombinant Matched Antibody Pair - PBS only. 83844-7-PBS was coated to a plate as the capture antibody and incubated with serial dilutions of standard Ag26601. 83844-1-PBS was HRP conjugated as the detection antibody. Range: 0.156-10 ng/mL



The mean SLC31A1 concentration was determined to be 305.42 ng/mL in NIC-HT 1299 cell extract based on a 1.5 mg/mL extract load.