

# PTPRS Recombinant Matched Antibody Pair, PBS Only

Catalog Number:MP00820-4

## Capture Antibody Information

**Catalog Number:**  
83833-4-PBS  
**Host:**  
Rabbit  
**Isotype:**  
IgG  
**Purification Method:**  
Protein A purification

**Clone ID:**  
241005H7  
**Reactivity:**  
human  
**GenBank:**  
NM\_002850

**Conjugate:**  
Unconjugated  
**Full name:**  
protein tyrosine phosphatase, receptor type, S  
**Gene ID:**  
5802

## Detection Antibody Information

**Catalog Number:**  
83833-1-PBS  
**Host:**  
Rabbit  
**Isotype:**  
IgG  
**Purification Method:**  
Protein A purification

**Clone ID:**  
241005C4  
**Reactivity:**  
human  
**GenBank:**  
NM\_002850

**Conjugate:**  
Unconjugated  
**Full name:**  
protein tyrosine phosphatase, receptor type, S  
**Gene ID:**  
5802

## Applications

**Tested Applications:**  
Sandwich ELISA

**Range:**  
46.8-3000 pg/mL (Sandwich ELISA)

**Recommended Dilutions:**  
It is recommended that this reagent should be titrated in each testing system to obtain optimal results.

## Product Information

MP00820-4 targets PTPRS in immunoassays as a matched antibody pair. Validated in Sandwich ELISA.

Capture antibody: PTPRS Recombinant antibody, PBS Only (Capture/Detector) 83833-4-PBS (241005H7). 100 µg. Concentration 1 mg/ml.

Detection antibody: PTPRS Recombinant antibody, PBS Only (Capture/Detector) 83833-1-PBS (241005C4). 100 µg. Concentration 1 mg/ml.

Unconjugated rabbit recombinant monoclonal antibody pair in PBS only storage buffer at a concentration of 1 mg/mL, ready for conjugation. Created using Proteintech's proprietary in-house recombinant technology. Recombinant production enables unrivalled batch-to-batch consistency, easy scale-up, and future security of supply.

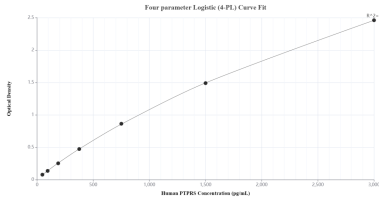
Matched antibody pairs are designed for use in a variety of assays and platforms that require matched antibody pairs.

Antibody use should be optimized for each application and assay.

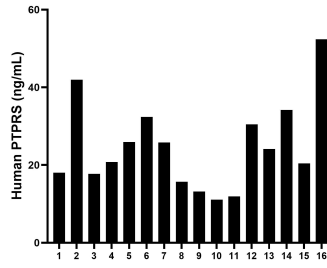
## Storage

**Storage:**  
Store at -80°C.  
**The product is shipped with ice packs. Upon receipt, store it immediately at -80°C**  
**Storage buffer:**  
PBS only

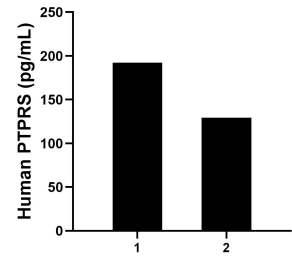
## Selected Validation Data



Sandwich ELISA standard curve of MP00820-4, Human PTPRS Recombinant Matched Antibody Pair - PBS only. 83833-4-PBS was coated to a plate as the capture antibody and incubated with serial dilutions of standard Eg0576. 83833-1-PBS was HRP conjugated as the detection antibody. Range: 46.8-3000 pg/mL



Serum of sixteen individual healthy human donors was measured. The PTPRS concentration of detected samples was determined to be 24.8 ng/mL with a range of 15.7 - 42.0 ng/mL



Cerebrospinal fluid of two individual human donors was measured. The PTPRS concentration of detected samples was determined to be 192.2 pg/mL and 129.3 pg/mL, respectively.