

For Research Use Only

CXCL8/IL-8 Recombinant Matched Antibody Pair, PBS Only



Catalog Number:MP00830-3

Capture Antibody Information

Catalog Number:
83903-5-PBS

Host:
Rabbit

Isotype:
IgG

Purification Method:
Protein A purification

Clone ID:
240889B4

Reactivity:
human

GenBank:
BC013615

Conjugate:
Unconjugated

Full name:
interleukin 8

Gene ID:
3576

Detection Antibody Information

Catalog Number:
83903-1-PBS

Host:
Rabbit

Isotype:
IgG

Purification Method:
Protein A purification

Clone ID:
240889C2

Reactivity:
human

GenBank:
BC013615

Conjugate:
Unconjugated

Full name:
interleukin 8

Gene ID:
3576

Applications

Tested Applications:
Sandwich ELISA

Range:
2.73-175 pg/mL (Sandwich ELISA)

Recommended Dilutions:
It is recommended that this reagent should be titrated in each testing system to obtain optimal results.

Product Information

MP00830-3 targets CXCL8/IL-8 in immunoassays as a matched antibody pair. Validated in Sandwich ELISA.

Capture antibody: CXCL8,IL8 Recombinant antibody, PBS Only (Capture) 83903-5-PBS (240889B4). 100 μ g. Concentration 1 mg/ml.

Detection antibody: CXCL8/IL-8 Recombinant antibody, PBS Only (Detector) 83903-1-PBS (240889C2). 100 μ g. Concentration 1 mg/ml.

Alternative CXCL8/IL-8 matched antibody pairs: MP00830-1, MP00830-2, MP50089-1

Unconjugated rabbit recombinant monoclonal antibody pair in PBS only storage buffer at a concentration of 1 mg/mL, ready for conjugation. Created using Proteintech's proprietary in-house recombinant technology. Recombinant production enables unrivalled batch-to-batch consistency, easy scale-up, and future security of supply.

Matched antibody pairs are designed for use in a variety of assays and platforms that require matched antibody pairs.

Antibody use should be optimized for each application and assay.

Storage

Storage:

Store at -80°C.

The product is shipped with ice packs. Upon receipt, store it immediately at -80°C

Storage buffer:

PBS only

For technical support and original validation data for this product please contact:

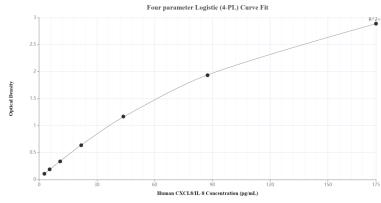
T: 4006900926

E: Proteintech-CN@ptglab.com

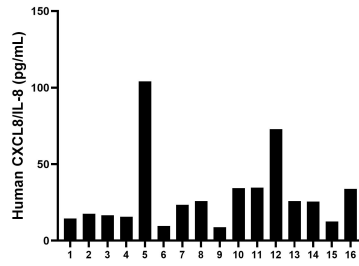
W: ptgcn.com

This product is exclusively available under Proteintech Group brand and is not available to purchase from any other manufacturer.

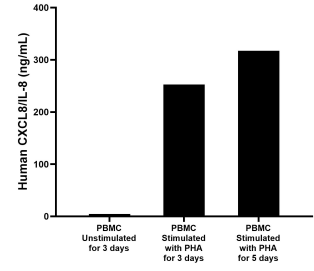
Selected Validation Data



Sandwich ELISA standard curve of MP00830-3, Human CXCL8/IL-8 Recombinant Matched Antibody Pair - PBS only. 83903-5-PBS was coated to a plate as the capture antibody and incubated with serial dilutions of standard Eg0152. 83903-1-PBS was HRP conjugated as the detection antibody. Range: 2.73-175 pg/mL



Serum of sixteen individual healthy human donors was measured. The CXCL8/IL-8 concentration of detected samples was determined to be 29.8 pg/mL with a range of 8.9 - 104.1 pg/mL



Human peripheral blood mononuclear cells (PBMC) were cultured unstimulated or stimulated with 10 μ g/mL PHA for 3 or 5 days. For the PBMC supernatant cultured for 3 days, the mean CXCL8/IL-8 concentration was determined to be 4.46 ng/mL in unstimulated PBMC supernatant, 252.88 ng/mL in PHA stimulated PBMC supernatant. For the PBMC supernatant cultured for 5 days, the mean CXCL8/IL-8 concentration was determined to be 317.16 ng/mL in PHA stimulated PBMC