

NCR3/NKp30 Recombinant Matched Antibody Pair, PBS Only

Catalog Number:MP00833-4

Capture Antibody Information

Catalog Number:
83882-4-PBS
Host:
Rabbit
Isotype:
IgG
Purification Method:
Protein A purification

Clone ID:
240809G11
Reactivity:
human
GenBank:
BC052582

Conjugate:
Unconjugated
Full name:
natural cytotoxicity triggering receptor 3
Gene ID:
259197

Detection Antibody Information

Catalog Number:
83882-5-PBS
Host:
Rabbit
Isotype:
IgG
Purification Method:
Protein A purification

Clone ID:
240809B11
Reactivity:
human
GenBank:
BC052582

Conjugate:
Unconjugated
Full name:
natural cytotoxicity triggering receptor 3
Gene ID:
259197

Applications

Tested Applications:
Sandwich ELISA

Range:
15.6-1000 pg/mL (Sandwich ELISA)

Recommended Dilutions:
It is recommended that this reagent should be titrated in each testing system to obtain optimal results.

Product Information

MP00833-4 targets NCR3/NKp30 in immunoassays as a matched antibody pair. Validated in Sandwich ELISA.

Capture antibody: NCR3/NKp30 Recombinant antibody, PBS Only (Capture) 83882-4-PBS (240809G11). 100 µg. Concentration 1 mg/ml.

Detection antibody: NCR3/NKp30 Recombinant antibody, PBS Only (Detector) 83882-5-PBS (240809B11). 100 µg. Concentration 1 mg/ml.

Alternative NCR3/NKp30 matched antibody pairs: MP00833-1, MP00833-2, MP00833-3, MP50119-1

Unconjugated rabbit recombinant monoclonal antibody pair in PBS only storage buffer at a concentration of 1 mg/mL, ready for conjugation. Created using Proteintech's proprietary in-house recombinant technology. Recombinant production enables unrivalled batch-to-batch consistency, easy scale-up, and future security of supply.

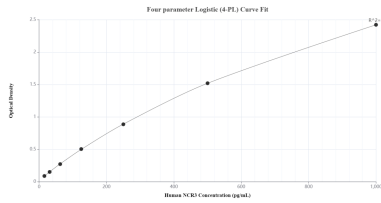
Matched antibody pairs are designed for use in a variety of assays and platforms that require matched antibody pairs.

Antibody use should be optimized for each application and assay.

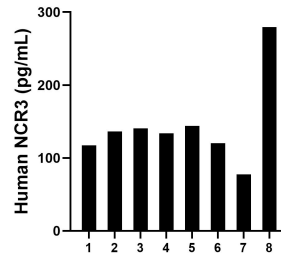
Storage

Storage:
Store at -80°C.
The product is shipped with ice packs. Upon receipt, store it immediately at -80°C
Storage buffer:
PBS only

Selected Validation Data



Sandwich ELISA standard curve of MP00833-4, Human NCR3/NKp30 Recombinant Matched Antibody Pair - PBS only. 83882-4-PBS was coated to a plate as the capture antibody and incubated with serial dilutions of standard Eg31663. 83882-5-PBS was HRP conjugated as the detection antibody. Range: 15.6-1000 pg/mL



Serum of eight individual healthy human donors was measured. The NCR3 concentration of detected samples was determined to be 143.6 pg/mL with a range of 77.4 - 279.5 pg/mL.