

# PLIN1 Recombinant Matched Antibody Pair, PBS Only

Catalog Number:MP00840-2

## Capture Antibody Information

**Catalog Number:**  
83905-3-PBS  
**Host:**  
Rabbit  
**Isotype:**  
IgG  
**Purification Method:**  
Protein A purification

**Clone ID:**  
240994H8  
**Reactivity:**  
human  
**GenBank:**  
NM\_001145311  
**Immunogen Catalog Number:**  
Ag26426

**Conjugate:**  
Unconjugated  
**Full name:**  
perilipin  
**Gene ID:**  
5346

## Detection Antibody Information

**Catalog Number:**  
83905-1-PBS  
**Host:**  
Rabbit  
**Isotype:**  
IgG  
**Purification Method:**  
Protein A purification

**Clone ID:**  
240994B2  
**Reactivity:**  
human  
**GenBank:**  
NM\_001145311  
**Immunogen Catalog Number:**  
Ag26426

**Conjugate:**  
Unconjugated  
**Full name:**  
perilipin  
**Gene ID:**  
5346

## Applications

**Tested Applications:**  
Cytometric bead array, Sandwich ELISA

**Range:**  
0.156-20 ng/mL (Cytometric Bead Array)  
0.156-10 ng/mL (Sandwich ELISA)

**Recommended Dilutions:**  
It is recommended that this reagent should be titrated in each testing system to obtain optimal results.

## Product Information

MP00840-2 targets PLIN1 in immunoassays as a matched antibody pair. Validated in Cytometric bead array, Sandwich ELISA.

Capture antibody: Perilipin 1 Recombinant antibody, PBS Only (Capture) 83905-3-PBS (240994H8). 100 µg. Concentration 1 mg/ml.

Detection antibody: Perilipin 1 Recombinant antibody, PBS Only (Capture/Detector) 83905-1-PBS (240994B2). 100 µg. Concentration 1 mg/ml.

Alternative PLIN1 matched antibody pairs: MP00840-1, MP00840-3, MP50400-1, MP50400-2

Unconjugated rabbit recombinant monoclonal antibody pair in PBS only storage buffer at a concentration of 1 mg/mL, ready for conjugation. Created using Proteintech's proprietary in-house recombinant technology. Recombinant production enables unrivalled batch-to-batch consistency, easy scale-up, and future security of supply.

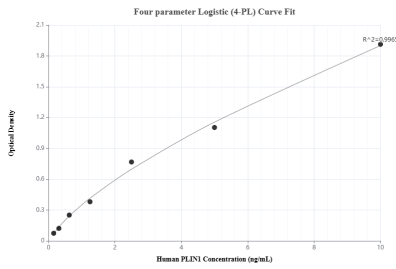
Matched antibody pairs are designed for use in a variety of assays and platforms that require matched antibody pairs.

Antibody use should be optimized for each application and assay.

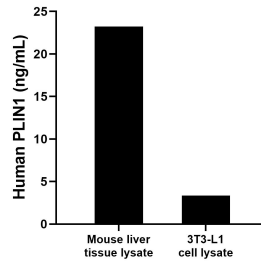
## Storage

**Storage:**  
Store at -80°C.  
**The product is shipped with ice packs. Upon receipt, store it immediately at -80°C**  
**Storage buffer:**  
PBS only

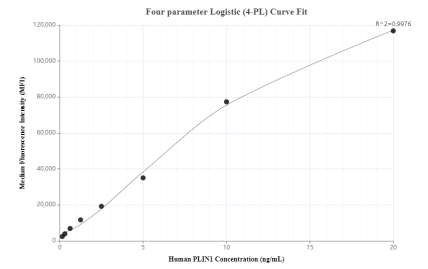
## Selected Validation Data



Sandwich ELISA standard curve of MP00840-2, Human PLIN1 Recombinant Matched Antibody Pair - PBS only. 83905-3-PBS was coated to a plate as the capture antibody and incubated with serial dilutions of standard Ag26426. 83905-1-PBS was HRP conjugated as the detection antibody. Range: 0.156-10 ng/mL



Mouse liver tissue lysate was measured. The human PLIN1 concentration in mouse liver tissue lysate was determined to be 23.24 ng/mL (based on a 3.70 mg/mL extract load). 3T3-L1 cell lysate was measured. The human PLIN1 concentration in 3T3-L1 cell lysate was determined to be 3.35 ng/mL (based on a 3.40 mg/mL extract load).



Cytometric bead array standard curve of MP00840-2, PLIN1 Recombinant Matched Antibody Pair, PBS Only. Capture antibody: 83905-3-PBS. Detection antibody: 83905-1-PBS. Standard: Ag26426. Range: 0.156-20 ng/mL