

For Research Use Only

AES Recombinant Matched Antibody Pair, PBS Only



Catalog Number:MP00860-3

Capture Antibody Information

Catalog Number:
83878-1-PBS
Host:
Rabbit
Isotype:
IgG
Purification Method:
Protein A purification

Clone ID:
240987C3
Reactivity:
human
GenBank:
BC113735
Immunogen Catalog Number:
Ag21021

Conjugate:
Unconjugated
Full name:
amino-terminal enhancer of split
Gene ID:
166

Detection Antibody Information

Catalog Number:
83878-2-PBS
Host:
Rabbit
Isotype:
IgG
Purification Method:
Protein A purification

Clone ID:
240987D7
Reactivity:
human
GenBank:
BC113735
Immunogen Catalog Number:
Ag21021

Conjugate:
Unconjugated
Full name:
amino-terminal enhancer of split
Gene ID:
166

Applications

Tested Applications:
Cytometric bead array

Range:
1.25-80 ng/mL (Cytometric Bead Array)

Recommended Dilutions:
It is recommended that this reagent should be titrated in each testing system to obtain optimal results.

Product Information

MP00860-3 targets AES in immunoassays as a matched antibody pair. Validated in Cytometric bead array.

Capture antibody: AES Recombinant antibody, PBS Only (Capture) 83878-1-PBS (240987C3). 100 μ g. Concentration 1 mg/ml.

Detection antibody: AES Recombinant antibody, PBS Only (Detector) 83878-2-PBS (240987D7). 100 μ g. Concentration 1 mg/ml.

Alternative AES matched antibody pairs: MP00860-1, MP00860-2

Unconjugated rabbit recombinant monoclonal antibody pair in PBS only storage buffer at a concentration of 1 mg/mL, ready for conjugation. Created using Proteintech's proprietary in-house recombinant technology. Recombinant production enables unrivalled batch-to-batch consistency, easy scale-up, and future security of supply.

Matched antibody pairs are designed for use in a variety of assays and platforms that require matched antibody pairs.

Antibody use should be optimized for each application and assay.

Storage

Storage:
Store at -80°C.
The product is shipped with ice packs. Upon receipt, store it immediately at -80°C
Storage buffer:
PBS only

For technical support and original validation data for this product please contact:

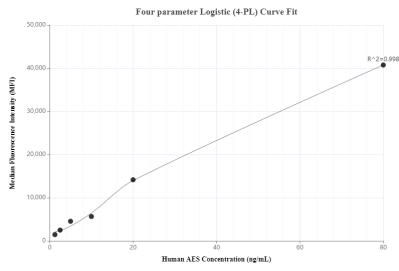
T: 4006900926

E: Proteintech-CN@ptglab.com

W: ptgcn.com

This product is exclusively available under Proteintech Group brand and is not available to purchase from any other manufacturer.

Selected Validation Data



Cytometric bead array standard curve of MP00860-3, AES Recombinant Matched Antibody Pair, PBS Only. Capture antibody: 83878-1-PBS. Detection antibody: 83878-2-PBS. Standard: Ag21021. Range: 1.25-80 ng/mL