

For Research Use Only

IGF1R Recombinant Matched Antibody Pair, PBS Only



Catalog Number:MP00869-4

Capture Antibody Information

Catalog Number:
84385-2-PBS

Host:
Rabbit

Isotype:
IgG

Purification Method:
Protein A purification

Clone ID:
241679C2

Reactivity:
human

GenBank:
BC113612

Conjugate:
Unconjugated

Full name:
IGF I receptor

Gene ID:
3480

Detection Antibody Information

Catalog Number:
84385-5-PBS

Host:
Rabbit

Isotype:
IgG

Purification Method:
Protein A purification

Clone ID:
241678A2

Reactivity:
human

GenBank:
BC113612

Conjugate:
Unconjugated

Full name:
IGF I receptor

Gene ID:
3480

Applications

Tested Applications:
Sandwich ELISA

Range:
0.313-20 ng/mL (Sandwich ELISA)

Recommended Dilutions:
It is recommended that this reagent should be titrated in each testing system to obtain optimal results.

Product Information

MP00869-4 targets IGF1R in immunoassays as a matched antibody pair. Validated in Sandwich ELISA.

Capture antibody: IGF1R Recombinant antibody, PBS Only (Capture) 84385-2-PBS (241679C2). 100 μ g. Concentration 1 mg/ml.

Detection antibody: IGF1R Recombinant antibody, PBS Only (Detector) 84385-5-PBS (241678A2). 100 μ g. Concentration 1 mg/ml.

Unconjugated rabbit recombinant monoclonal antibody pair in PBS only storage buffer at a concentration of 1 mg/mL, ready for conjugation. Created using Proteintech's proprietary in-house recombinant technology. Recombinant production enables unrivalled batch-to-batch consistency, easy scale-up, and future security of supply.

Matched antibody pairs are designed for use in a variety of assays and platforms that require matched antibody pairs.

Antibody use should be optimized for each application and assay.

Storage

Storage:

Store at -80°C.

The product is shipped with ice packs. Upon receipt, store it immediately at -80°C

Storage buffer:

PBS only

For technical support and original validation data for this product please contact:

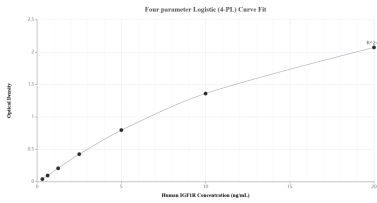
T: 4006900926

E: Proteintech-CN@ptglab.com

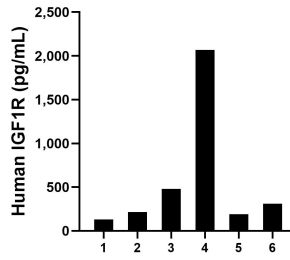
W: ptgcn.com

This product is exclusively available under Proteintech Group brand and is not available to purchase from any other manufacturer.

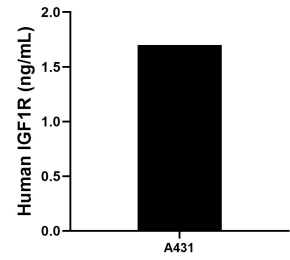
Selected Validation Data



Sandwich ELISA standard curve of MP00869-4, Human IGF1R Recombinant Matched Antibody Pair - PBS only. 84385-2-PBS was coated to a plate as the capture antibody and incubated with serial dilutions of standard RPO0008. 84385-5-PBS was HRP conjugated as the detection antibody. Range: 0.313-20 ng/mL.



Serum of six individual healthy human donors was measured. The IGF1R concentration of detected samples was determined to be 566.66 pg/mL with a range of 132.19-2,068.11 pg/mL.



The mean IGF1R concentration was determined to be 1.70 ng/mL in A431 cell extract based on a 2.90 mg/mL extract load.